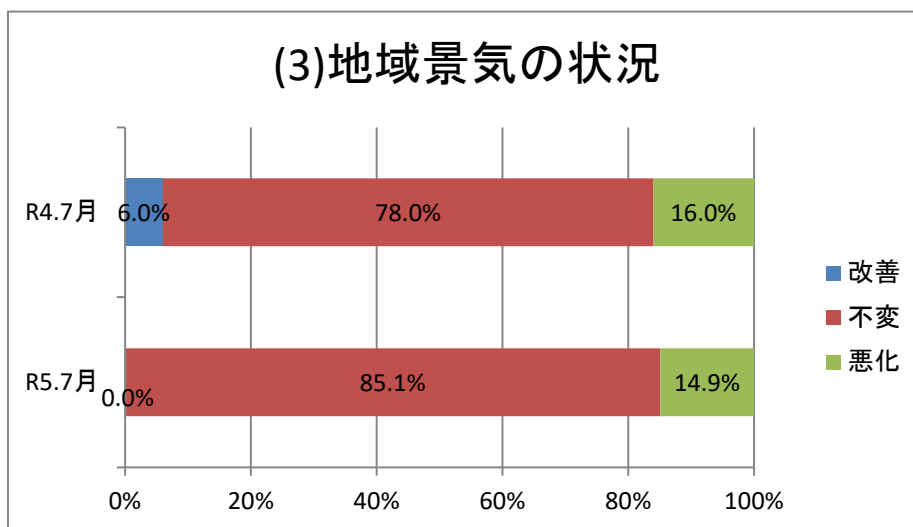
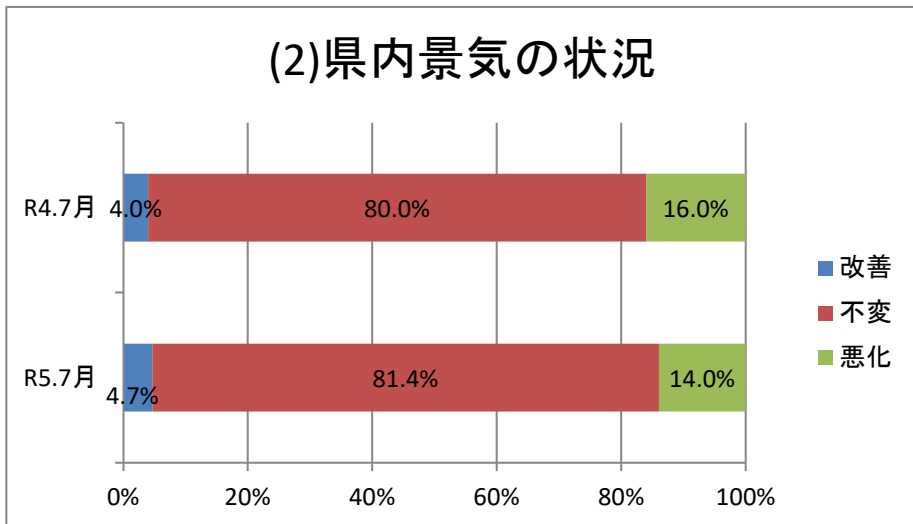
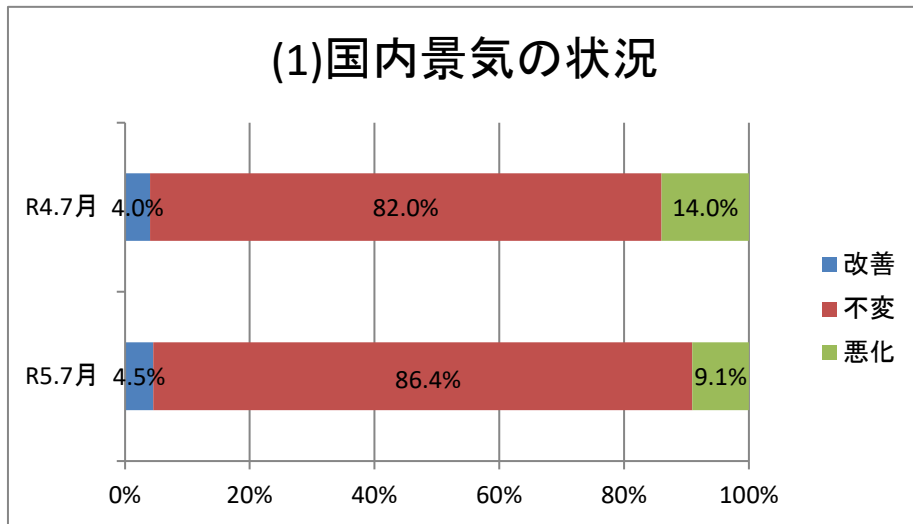
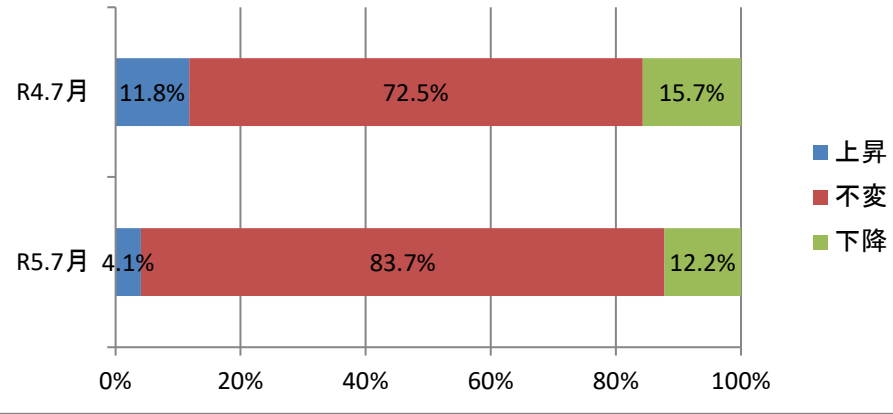


# 岩手県機械金属工業協同組合連合会景気動向調査結果（令和5年7月調査分）

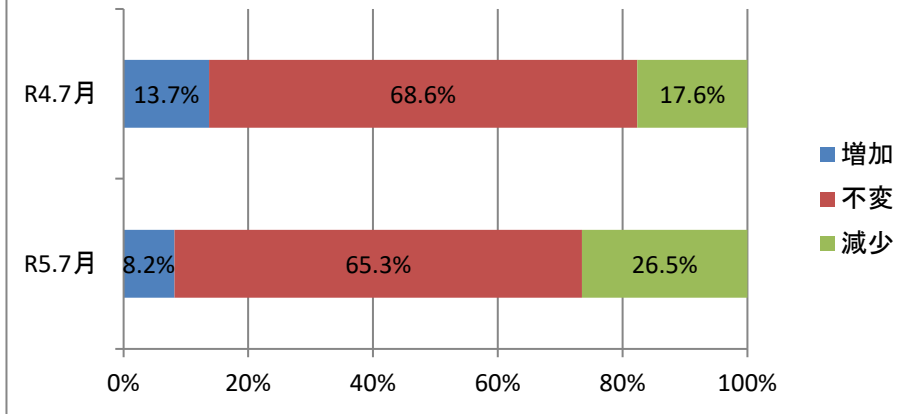
回答数 令和4年7月・・・51社／99社(51.6%)  
令和5年7月・・・48社／86社(55.8%)



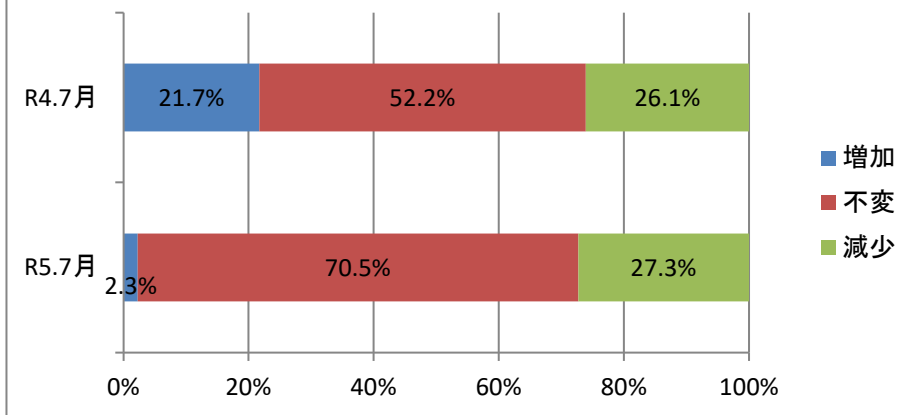
### (1) 業界の景況



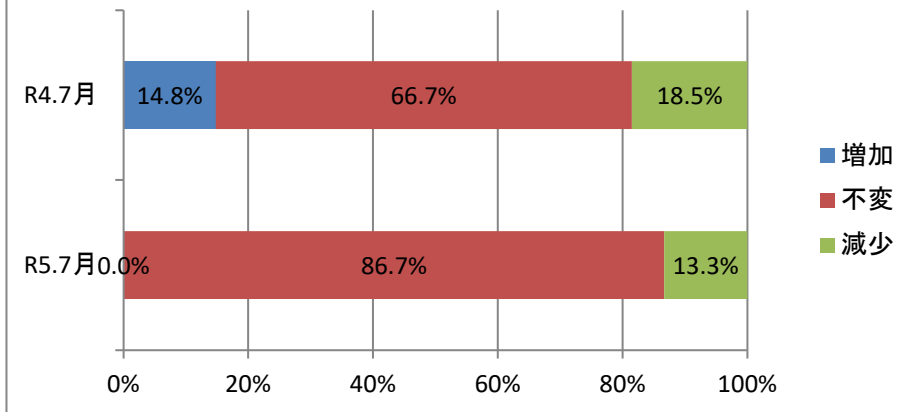
### (2) 売上高



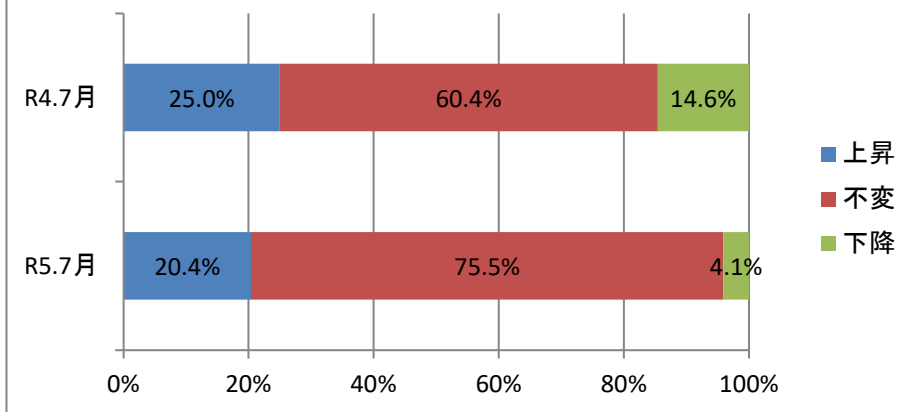
### (3) 国内外需要①国内需要



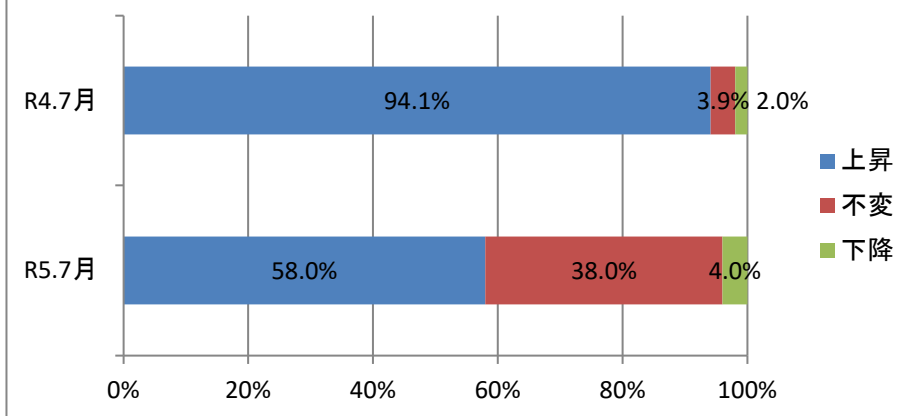
### (3)国内外需要②海外需要



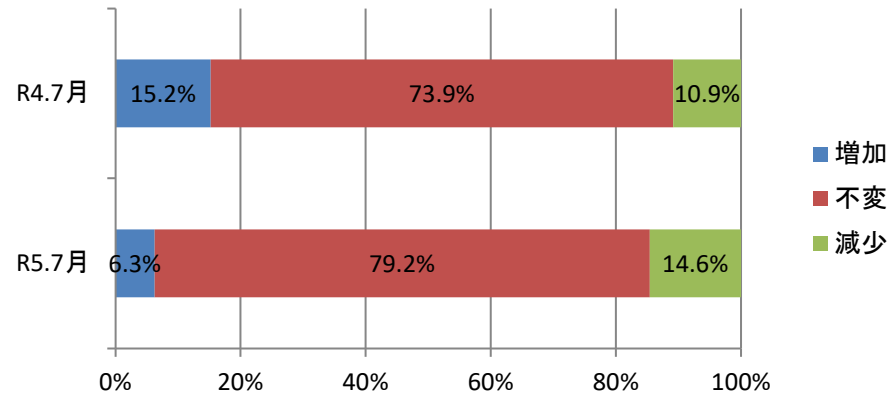
### (4)製品販売(受注)価格



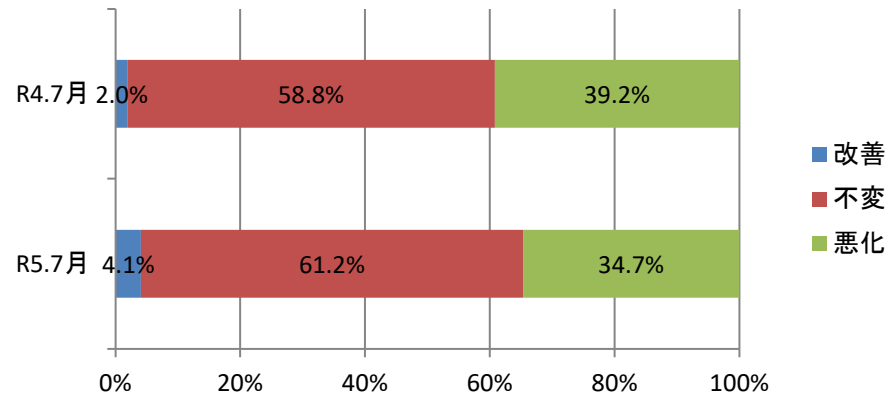
### (5)原材料費



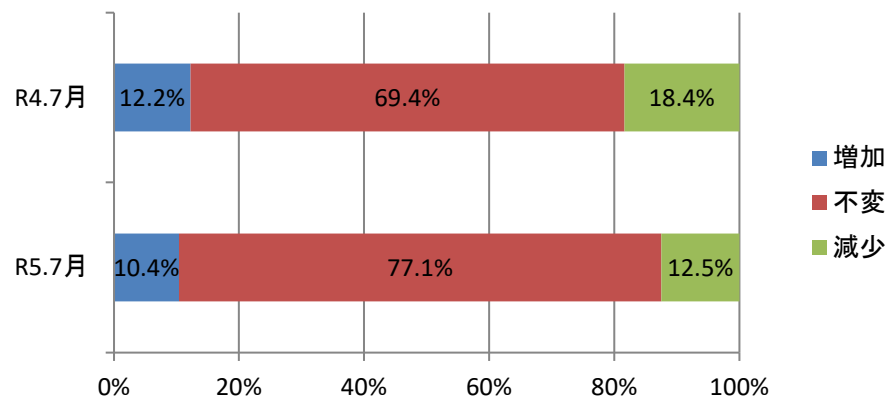
### (6) 在庫数量



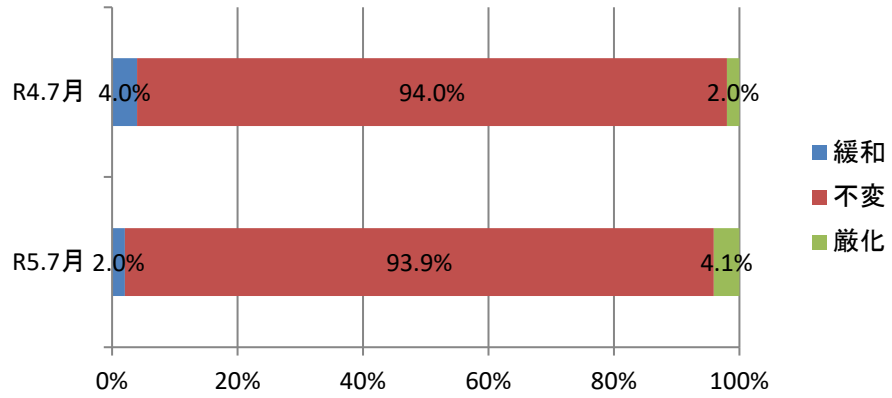
### (7) 収益状況



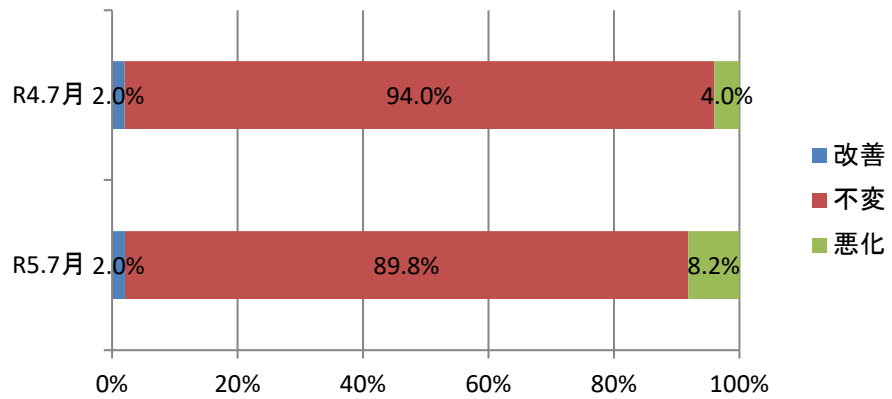
### (8) 設備投資



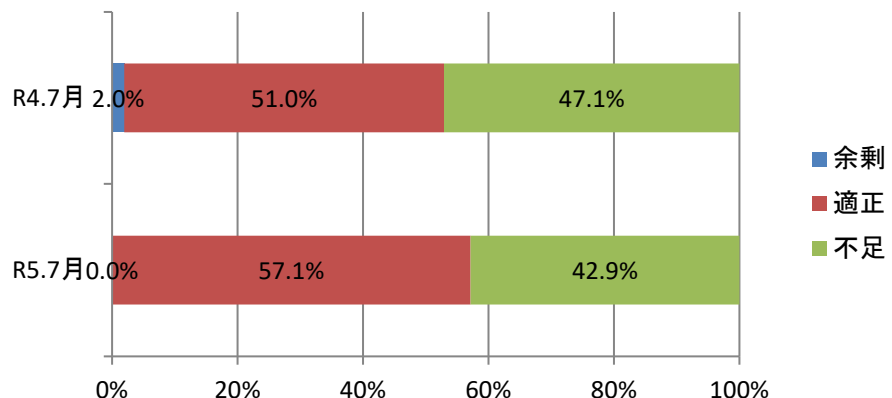
### (9)金融機関の融資態度

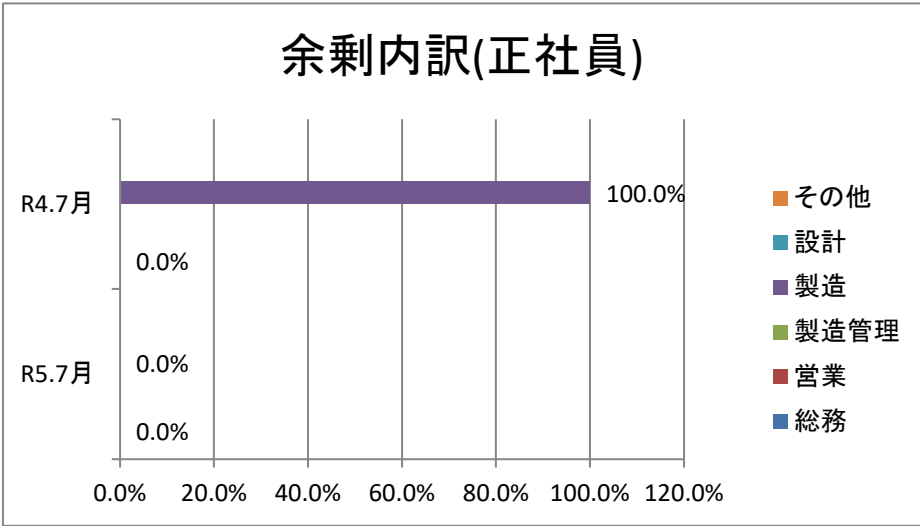


### (10)資金繰り

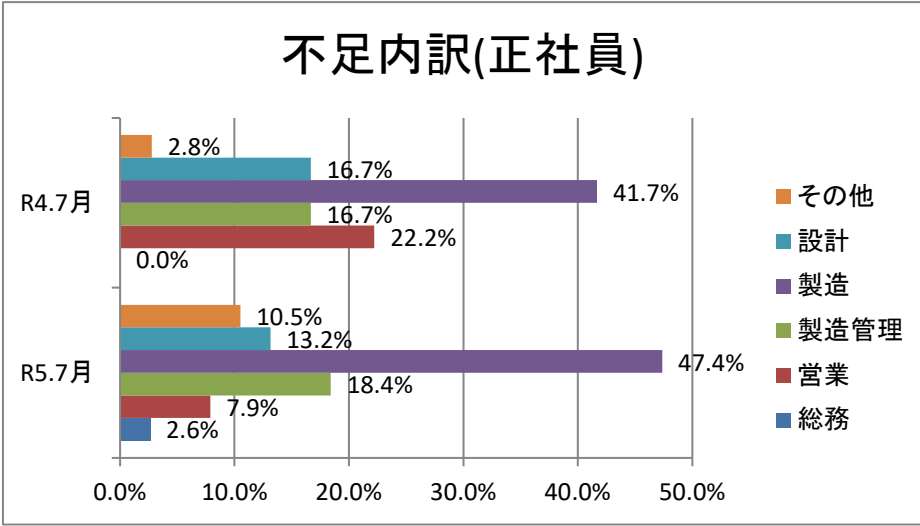


### (11)雇用状況①正社員数

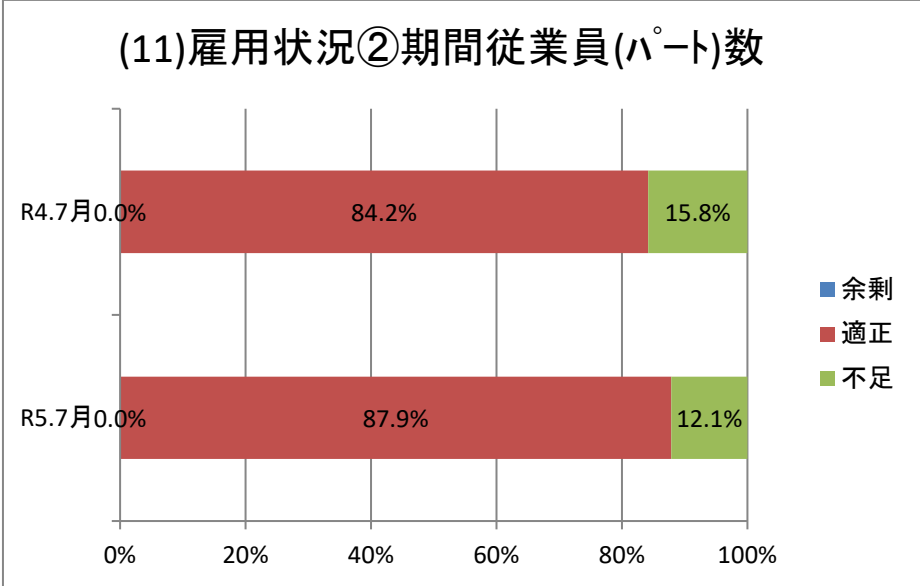


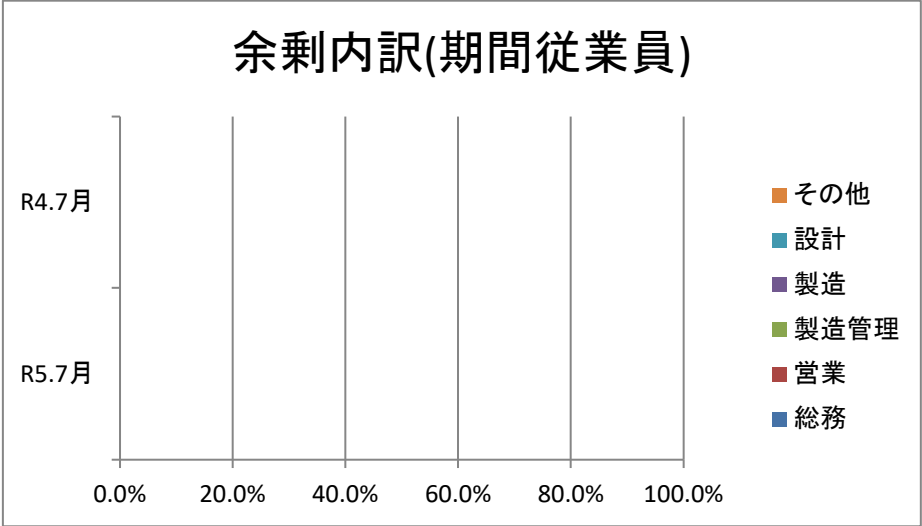


※総回答数に対する割合。

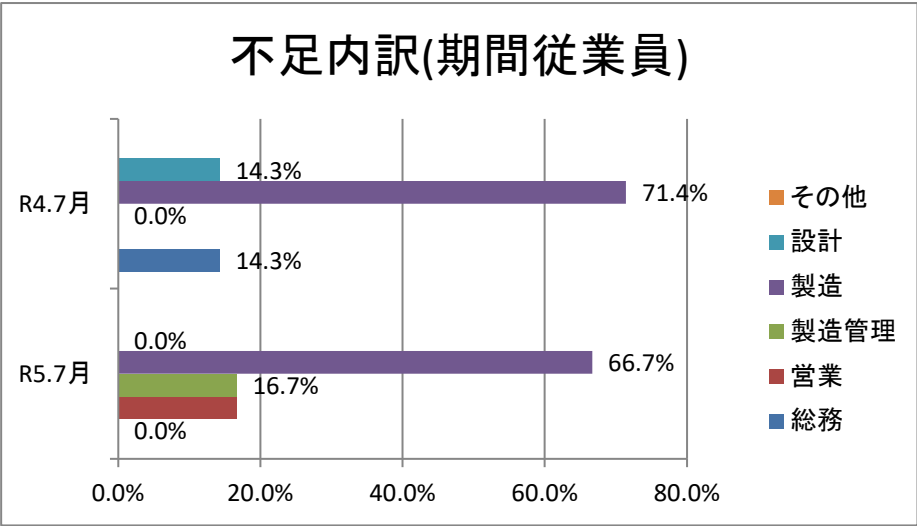


※総回答数に対する割合。

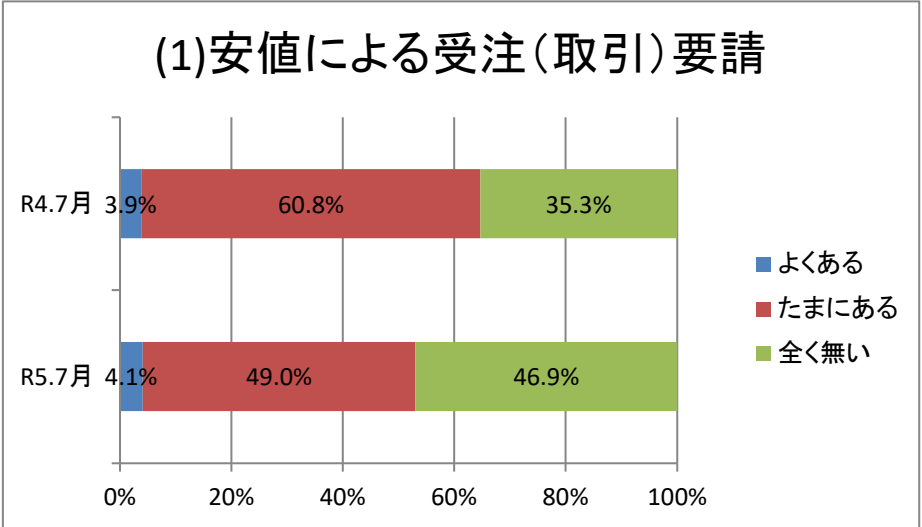




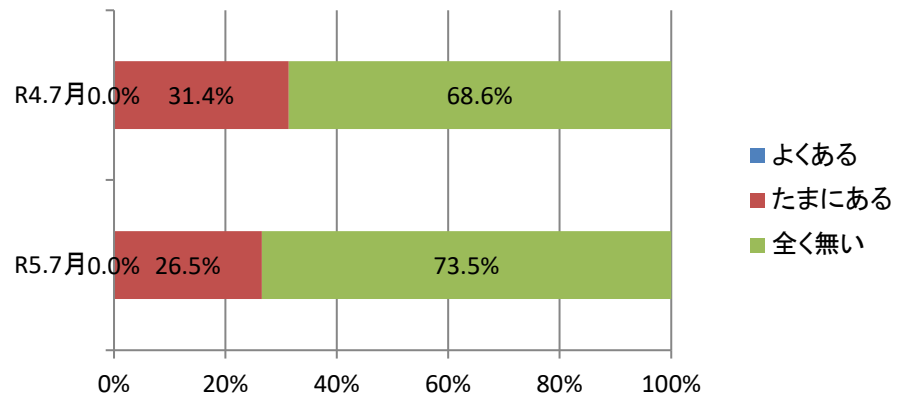
※総回答数に対する割合。



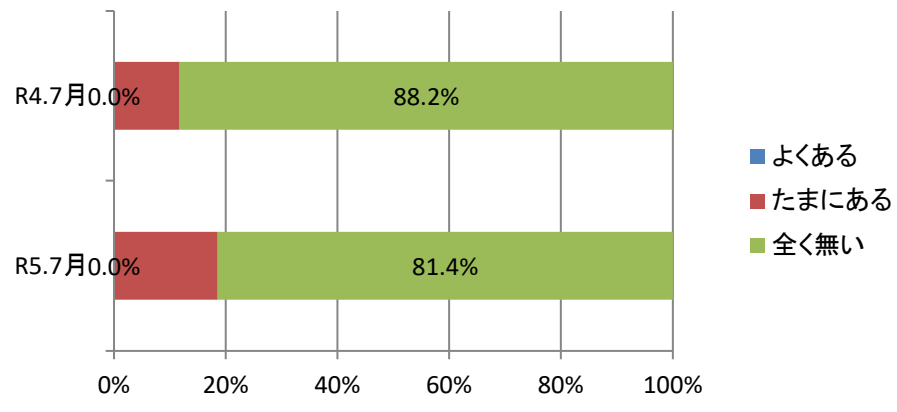
※総回答数に対する割合。



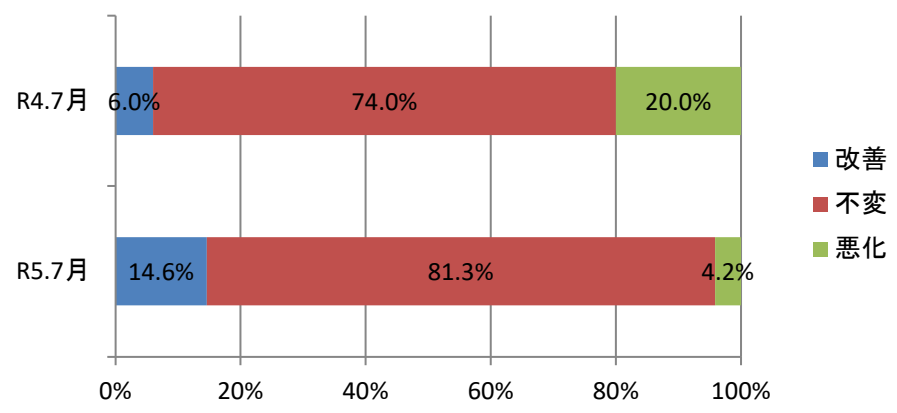
## (2)受注後の値下げ要請



## (3)決済方法の変更

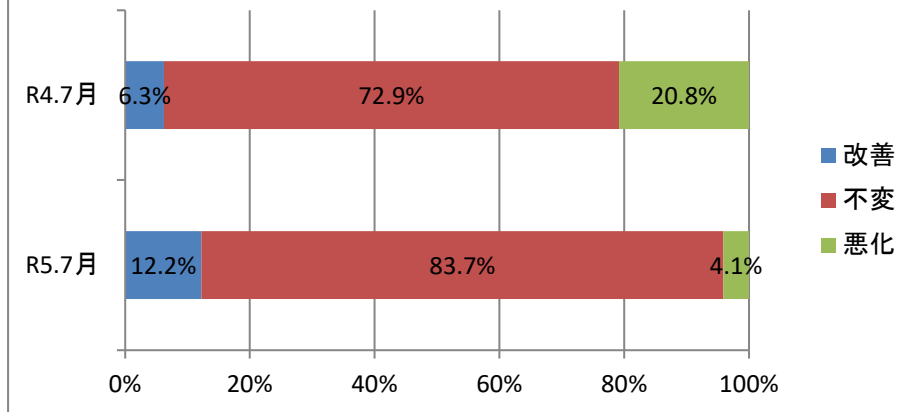


## (1)国内景気の見通し

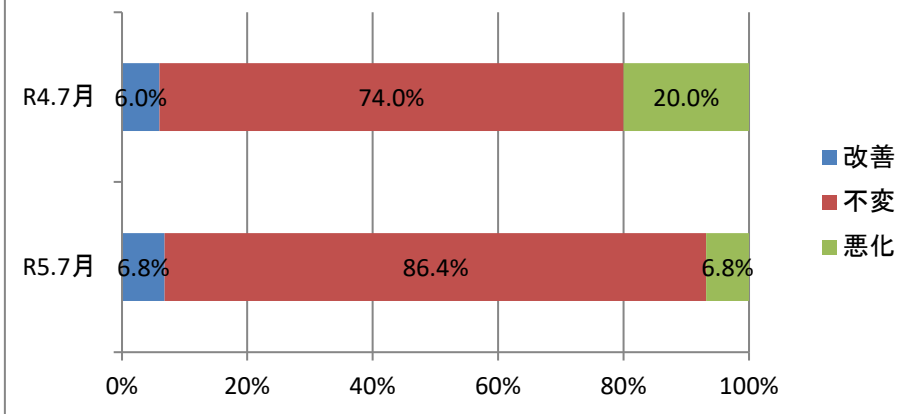




## (2) 県内景気の見通し



## (3) 所在地域の景気見通し



## (4) 業界の見通し

