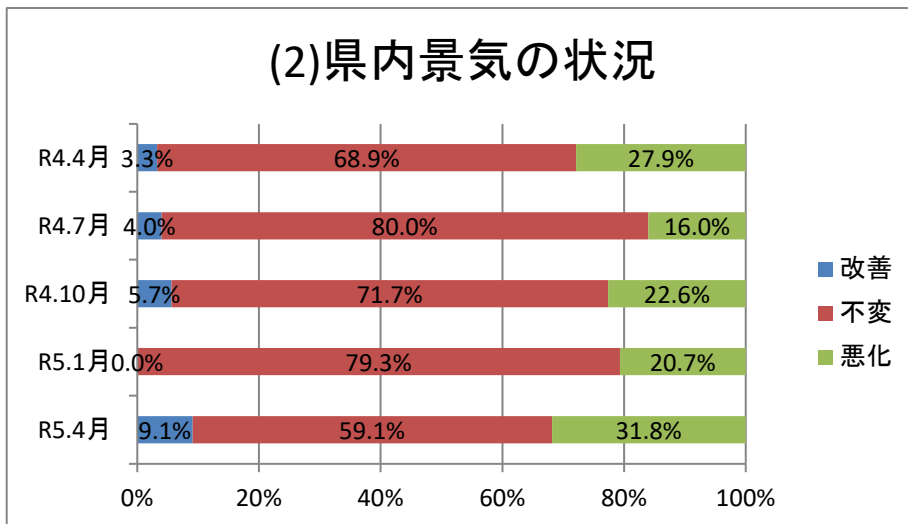
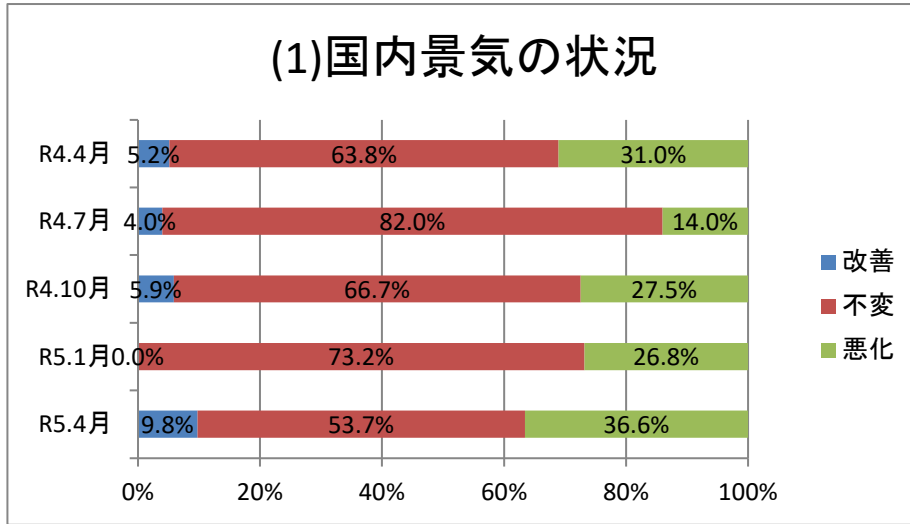


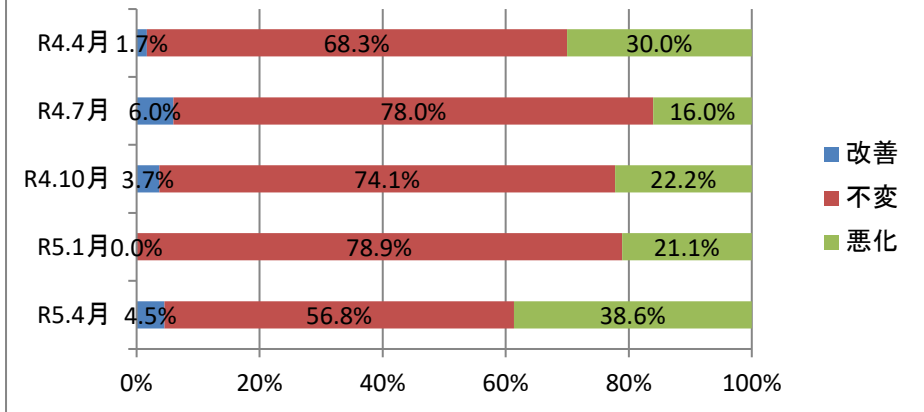
# 岩手県機械金属工業協同組合連合会景気動向調査

回答数 令和4年 4月…60社／99社(60.6%)  
令和4年 7月…51社／99社(51.6%)  
令和4年10月…54社／99社(54.5%)  
令和5年 1月…56社／99社(56.6%)  
参考：令和5年 4月…46社／86社(53.4%)

## 1. 景気状況

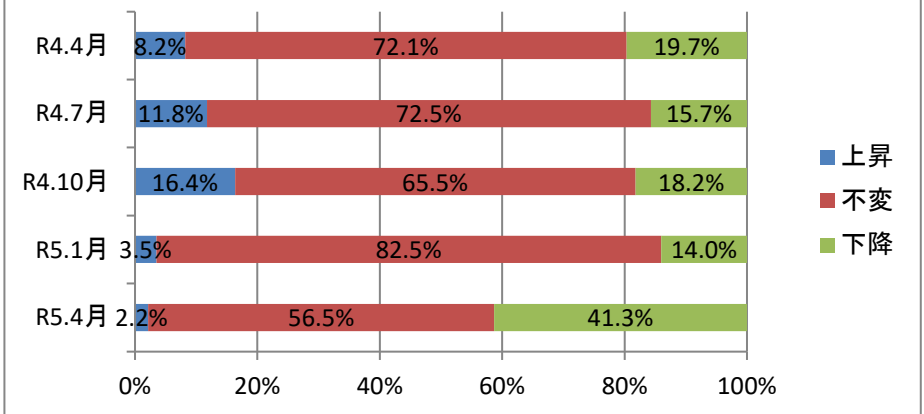


### (3)地域景気の状況

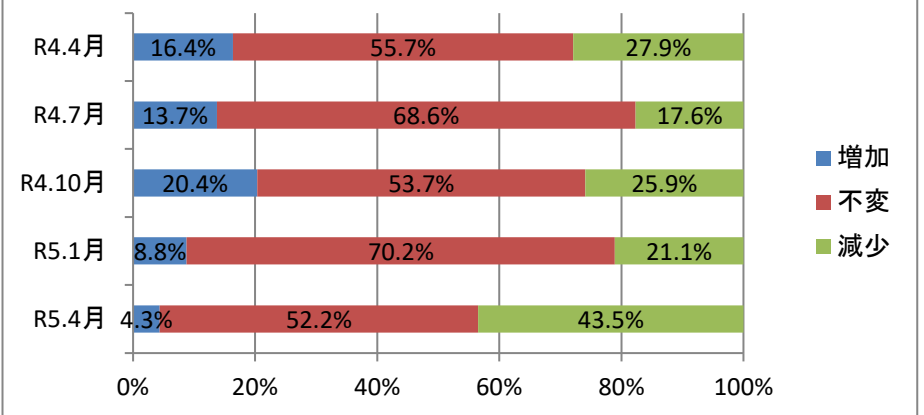


## 2. 業界景況・売上高等

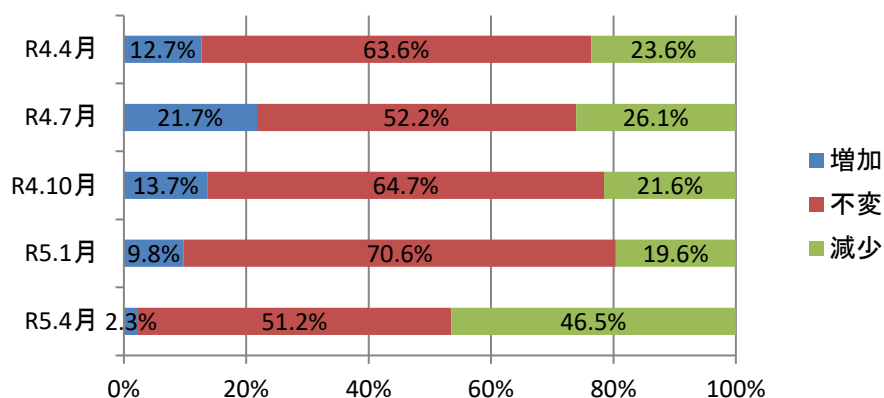
### (1)業界の景況



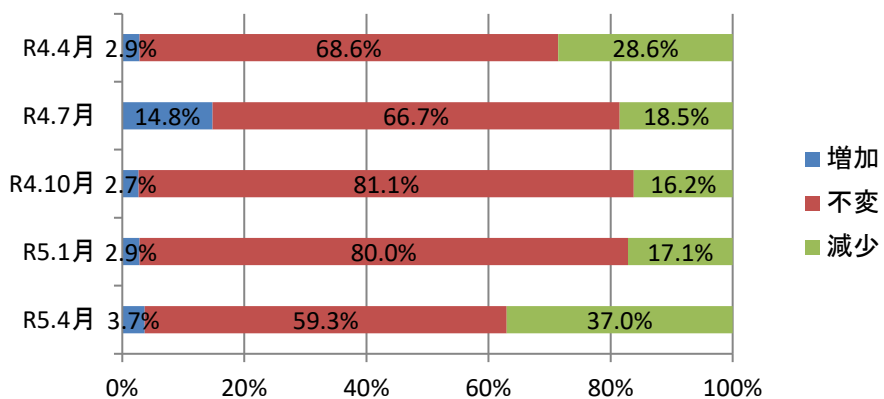
### (2)売上高



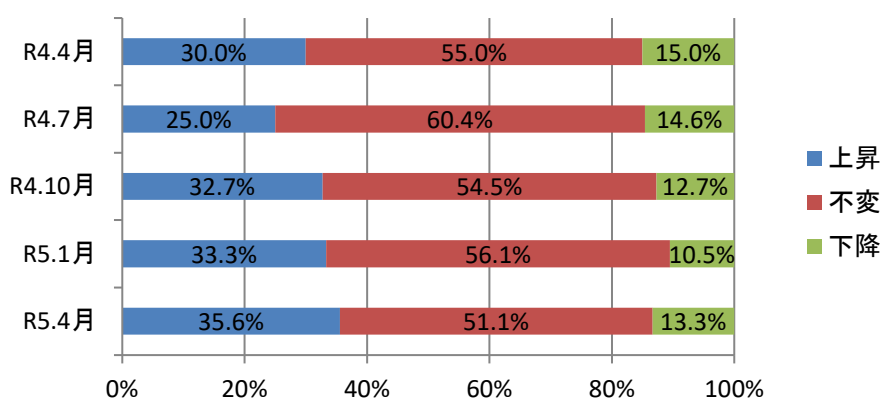
### (3)国内外需要①国内需要



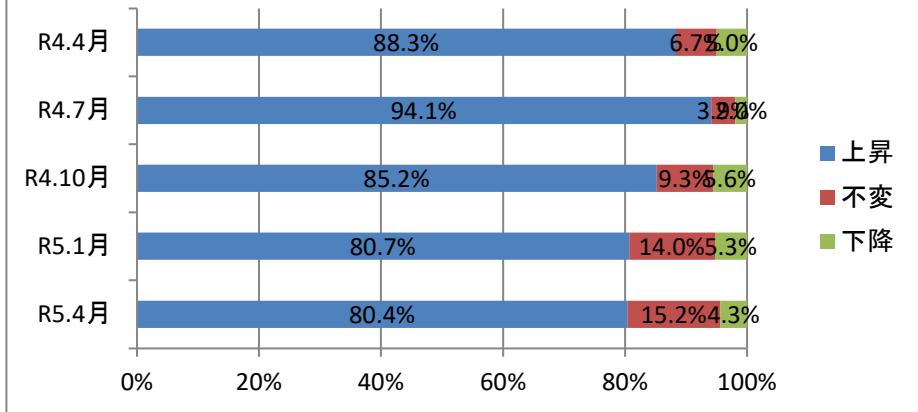
### (3)国内外需要②海外需要



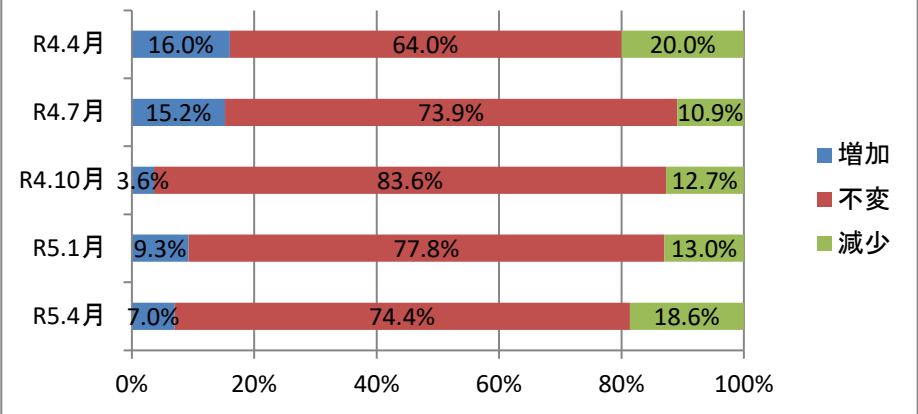
### (4)製品販売(受注)価格



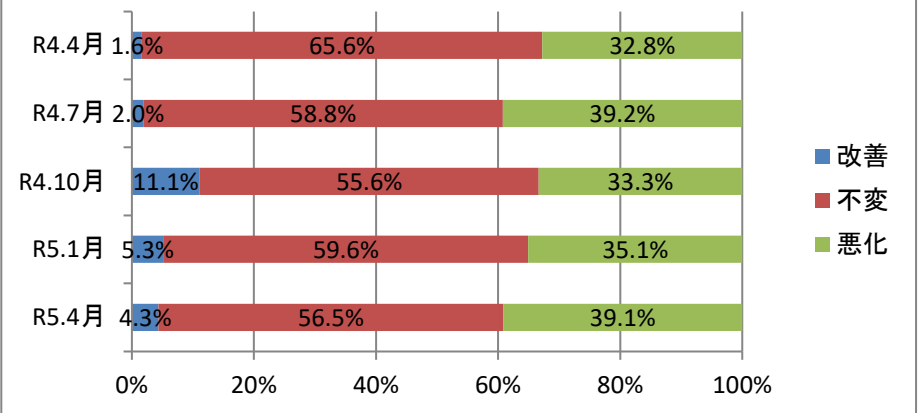
### (5) 原材料費



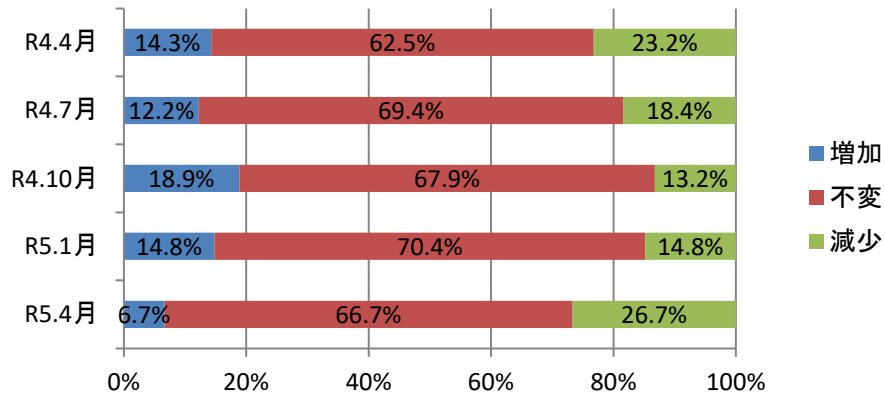
### (6) 在庫数量



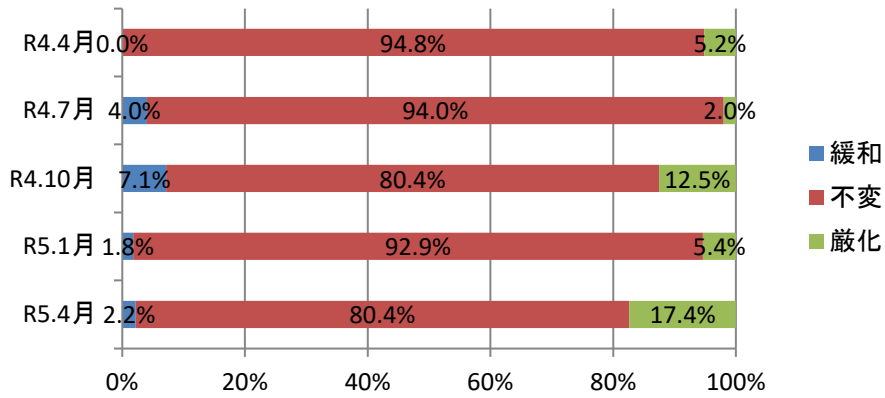
### (7) 収益状況



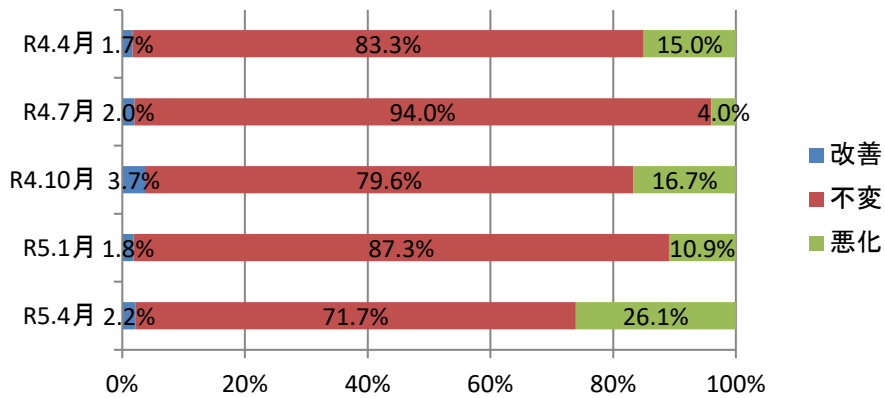
### (8)設備投資



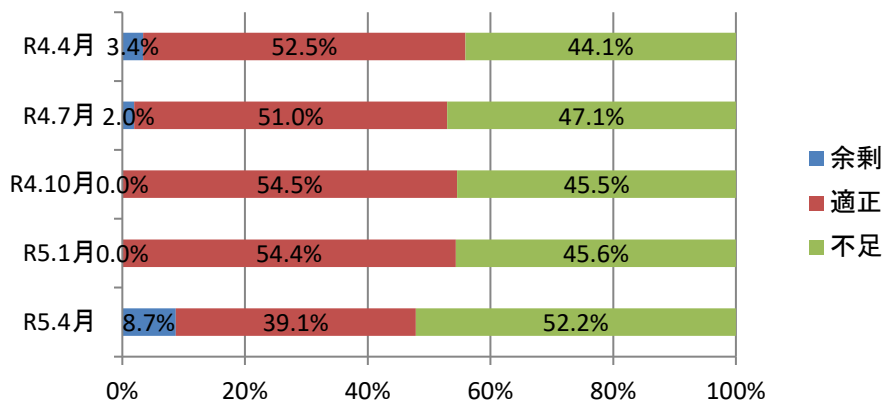
### (9)金融機関の融資態度



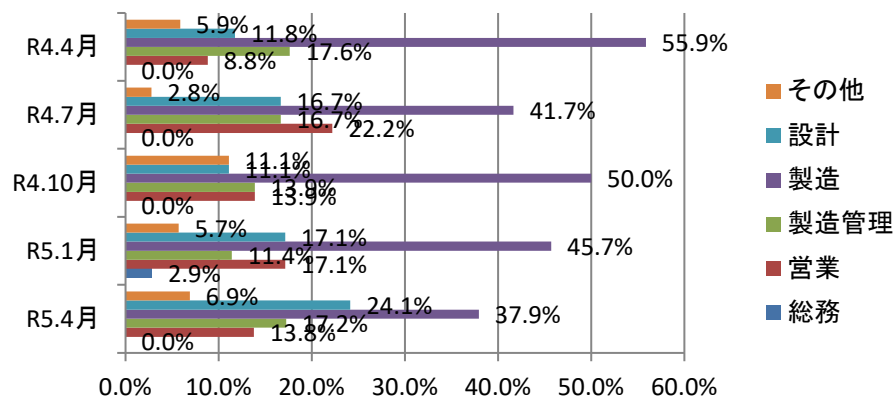
### (10)資金繰り



### (11)雇用状況①正社員数

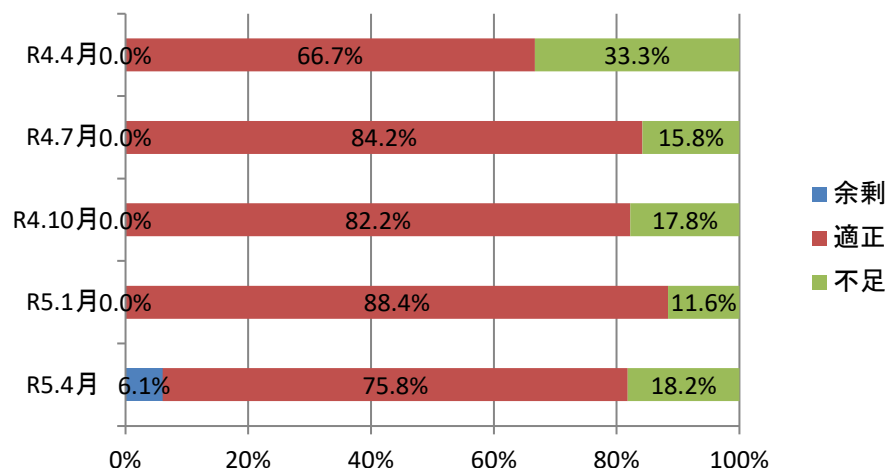


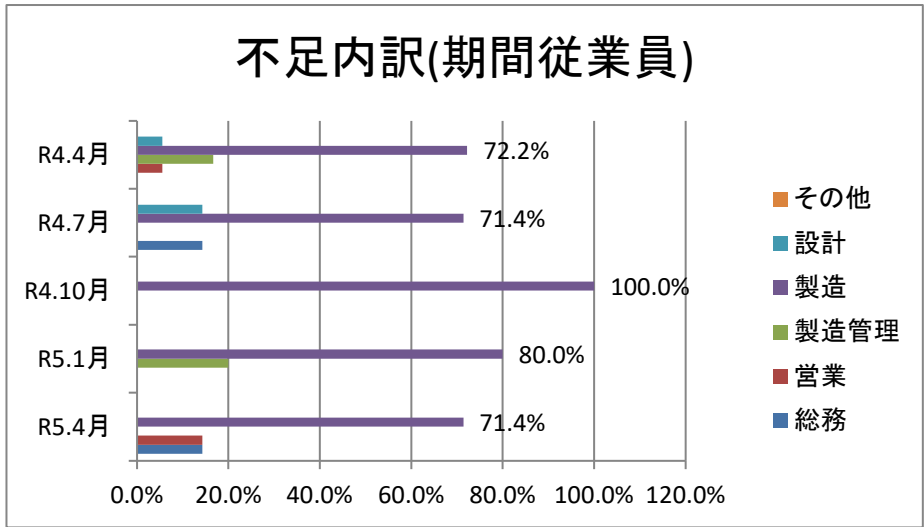
### 不足内訳(正社員)



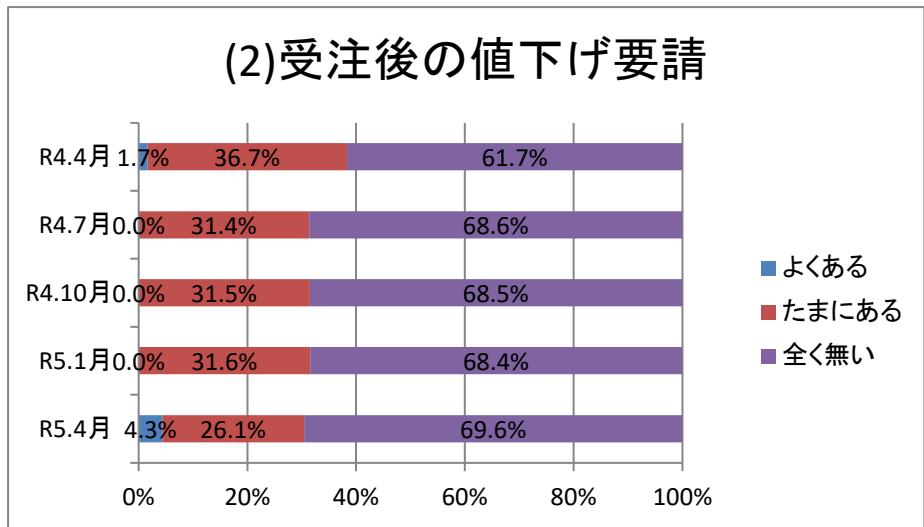
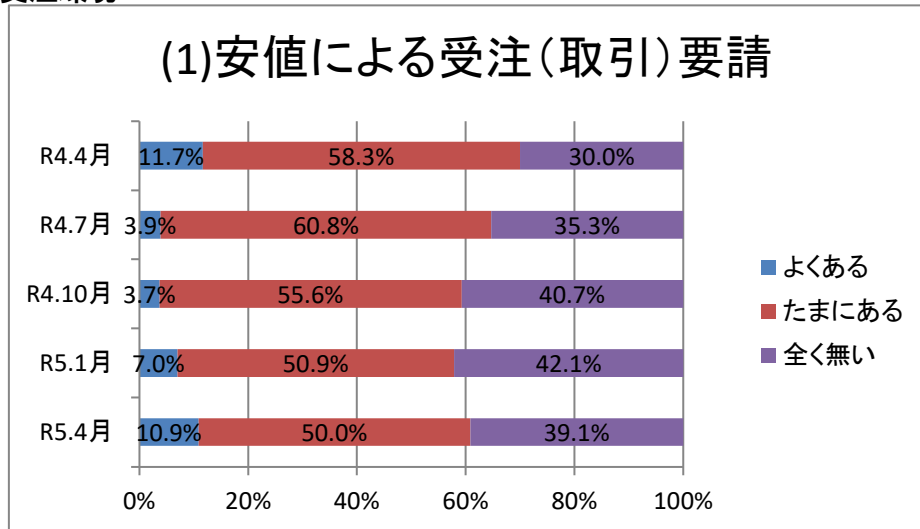
※総回答数に対する割合。

### (11)雇用状況②期間従業員(パート)数

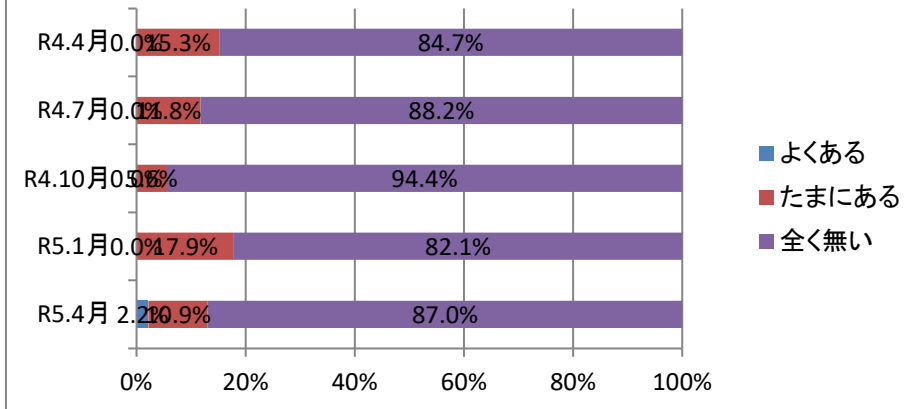




### 3. 受注環境

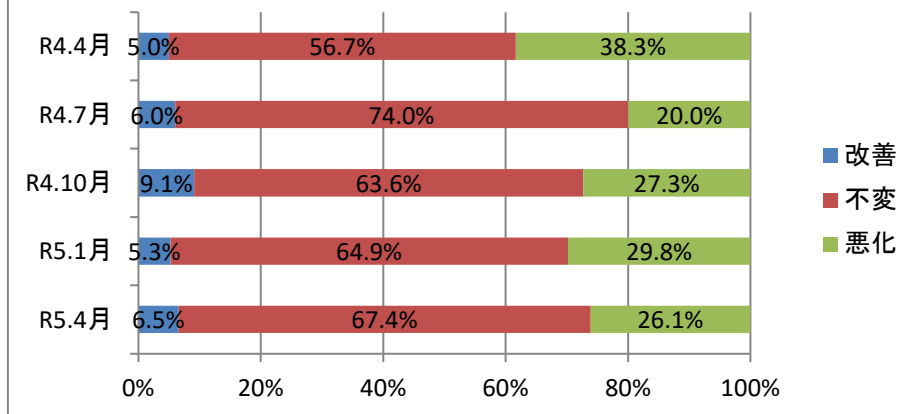


### (3) 決済方法の変更

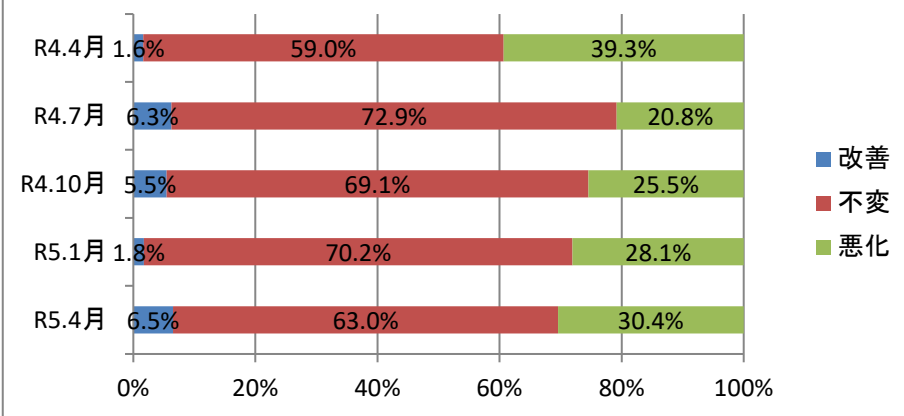


## 4. 景気見通し

### (1) 国内景気の見通し

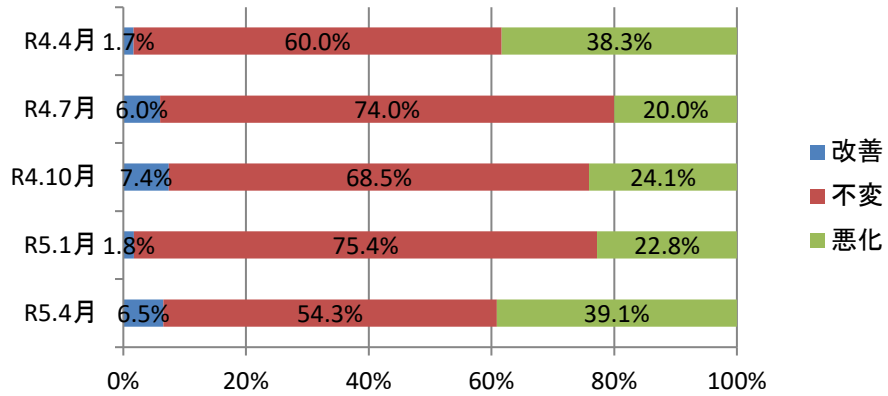


### (2) 県内景気の見通し





### (3)所在地域の景気見通し



### (4)業界の見通し

