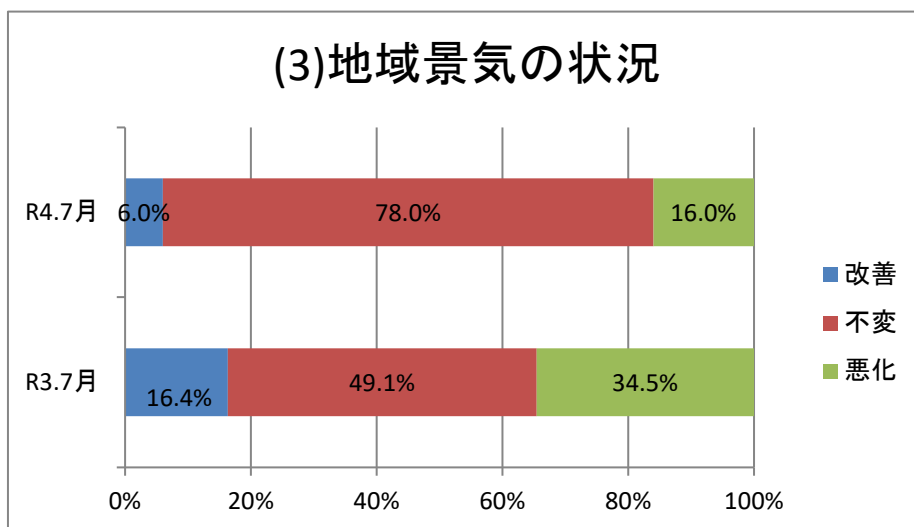
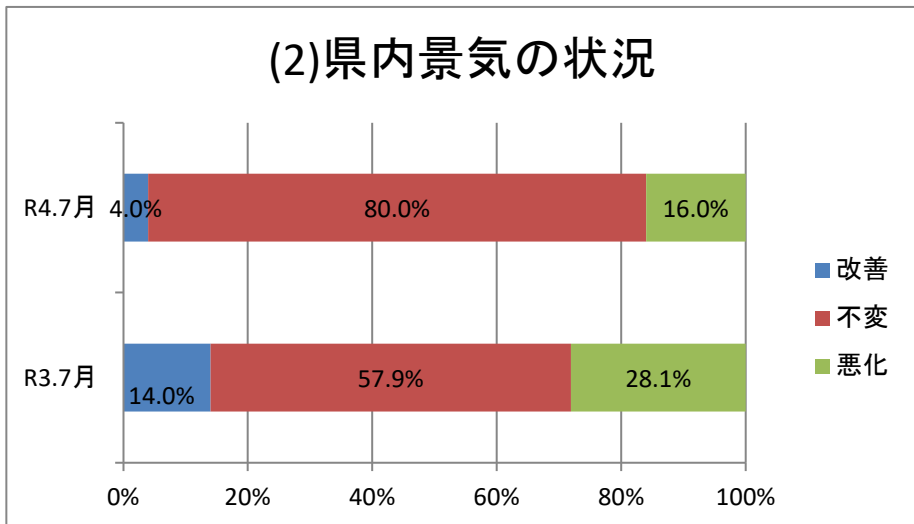
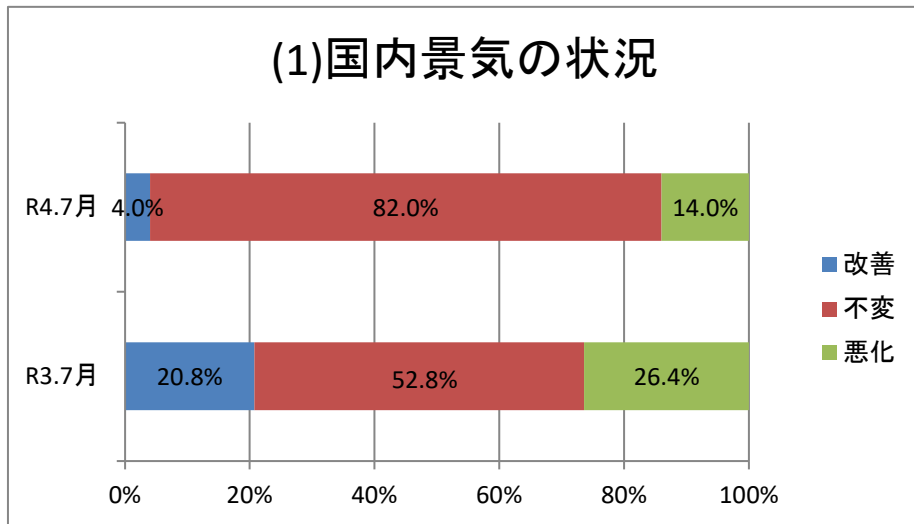
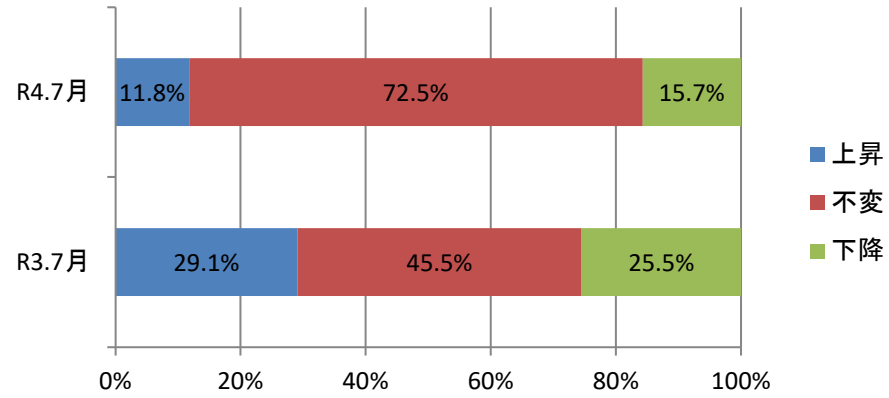


岩手県機械金属工業協同組合連合会景気動向調査結果（令和4年7月調査分）

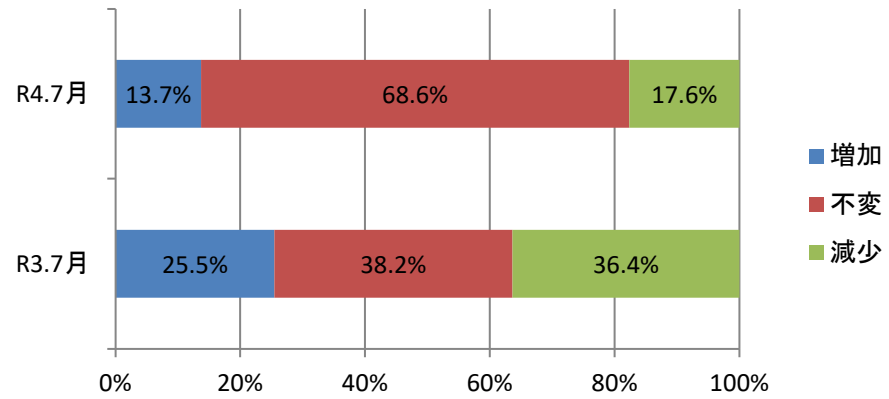
回答数 令和4年7月・・・51社／99社(51.6%)
令和3年7月・・・58社／99社(58.6%)



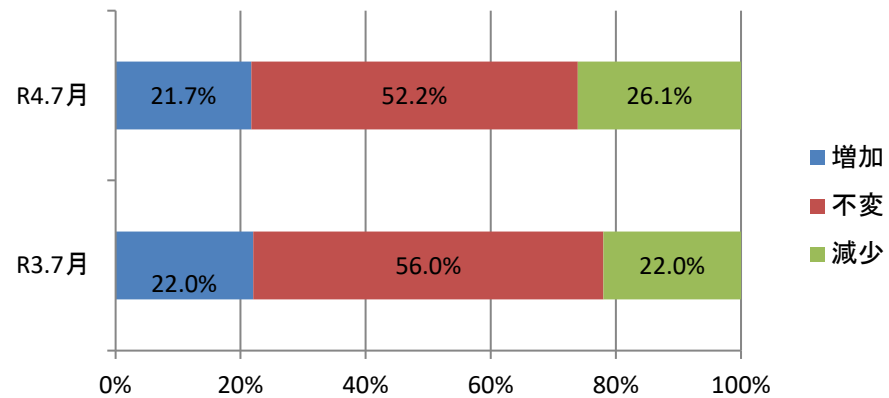
(1) 業界の景況



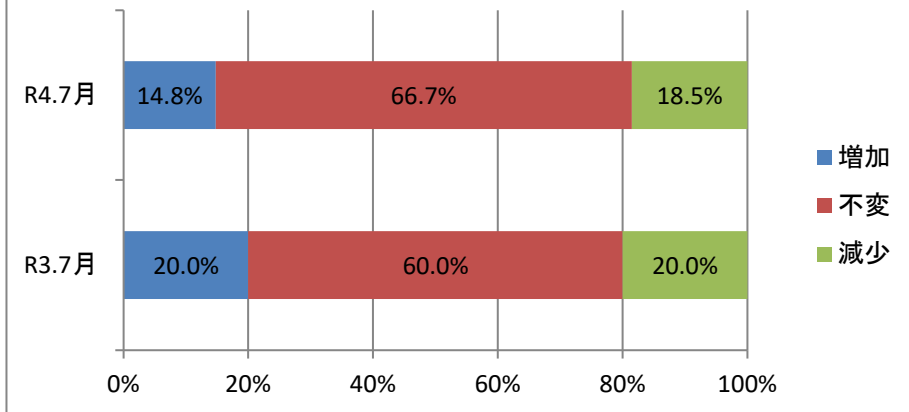
(2) 売上高



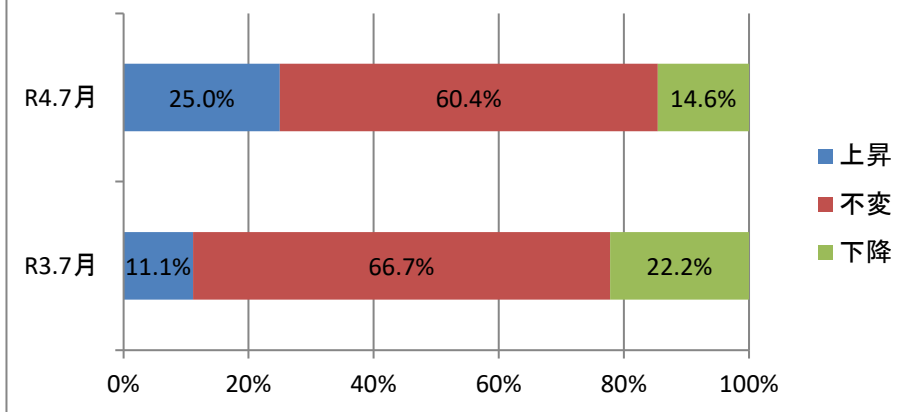
(3) 国内外需要①国内需要



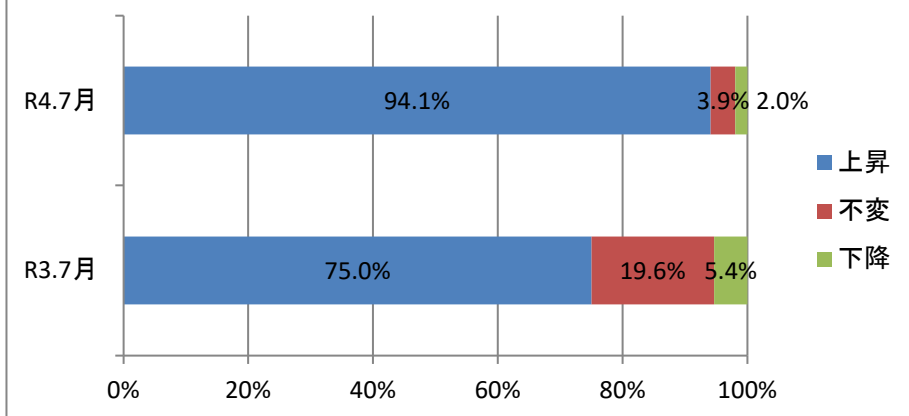
(3)国内外需要②海外需要



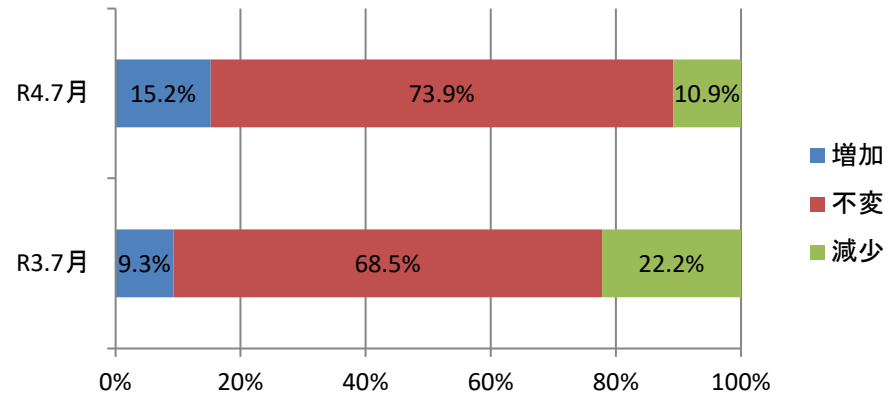
(4)製品販売(受注)価格



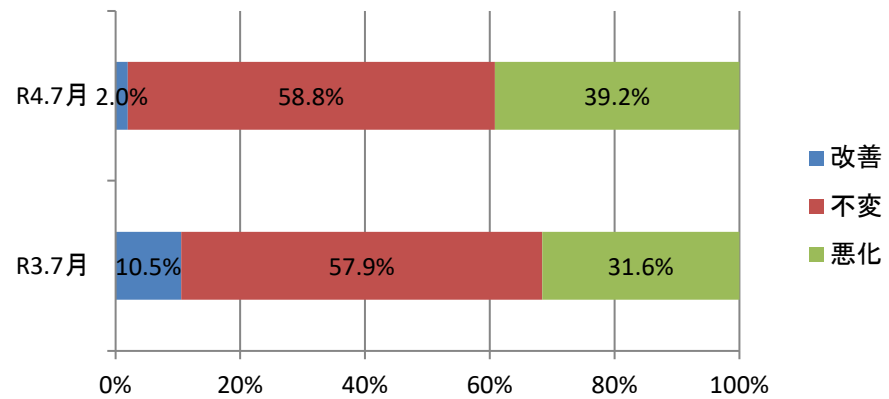
(5)原材料費



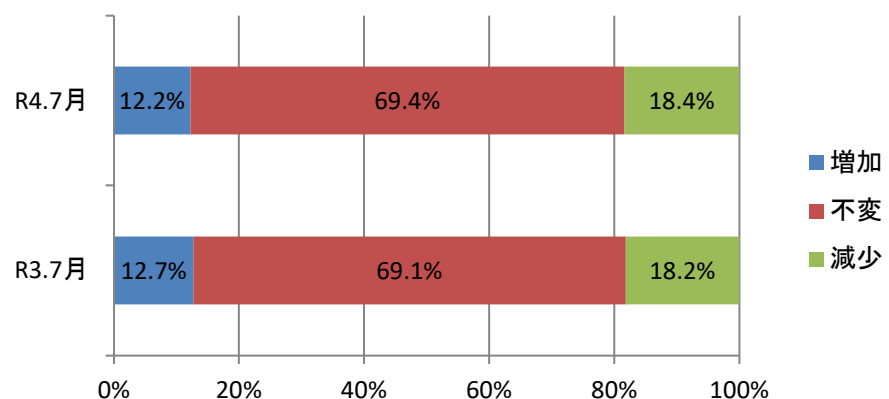
(6) 在庫数量



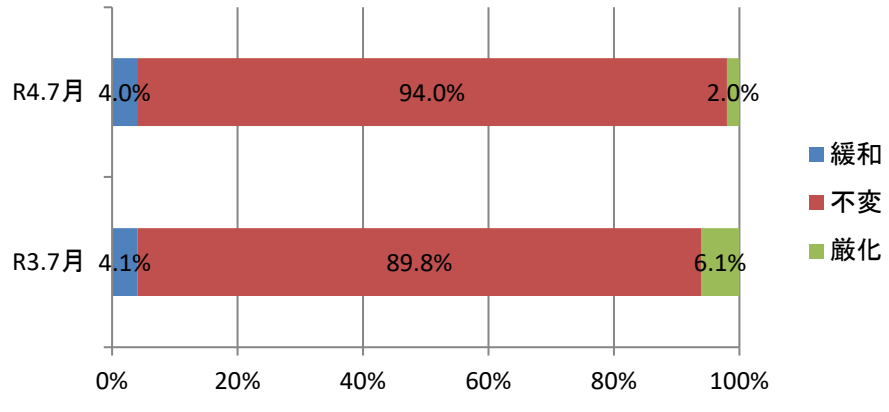
(7) 収益状況



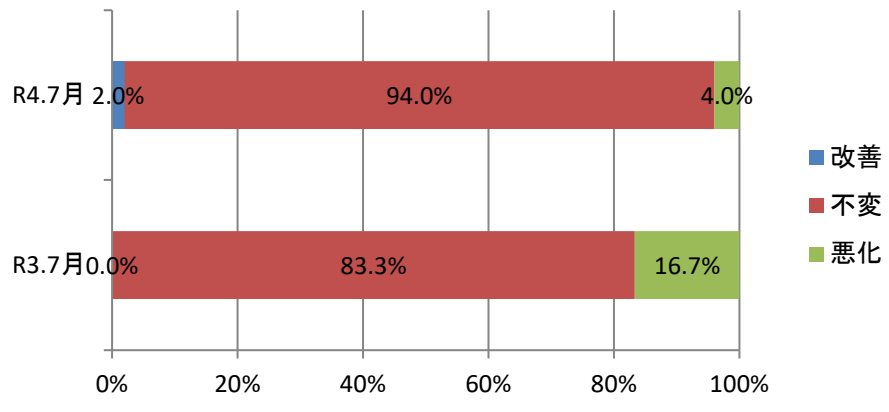
(8) 設備投資



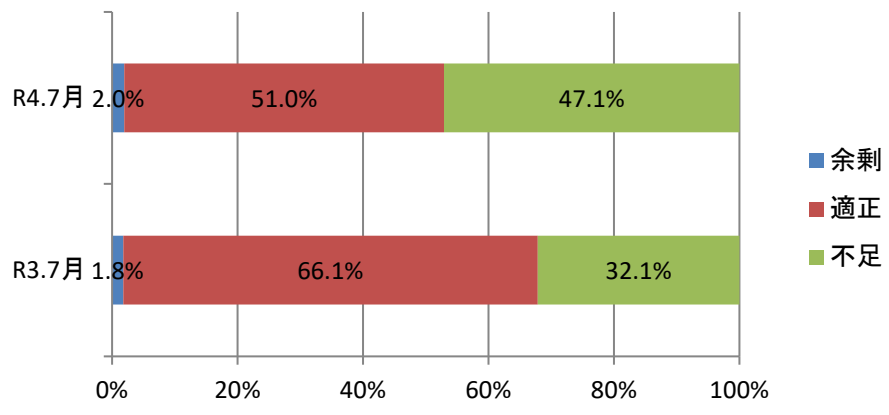
(9) 金融機関の融資態度

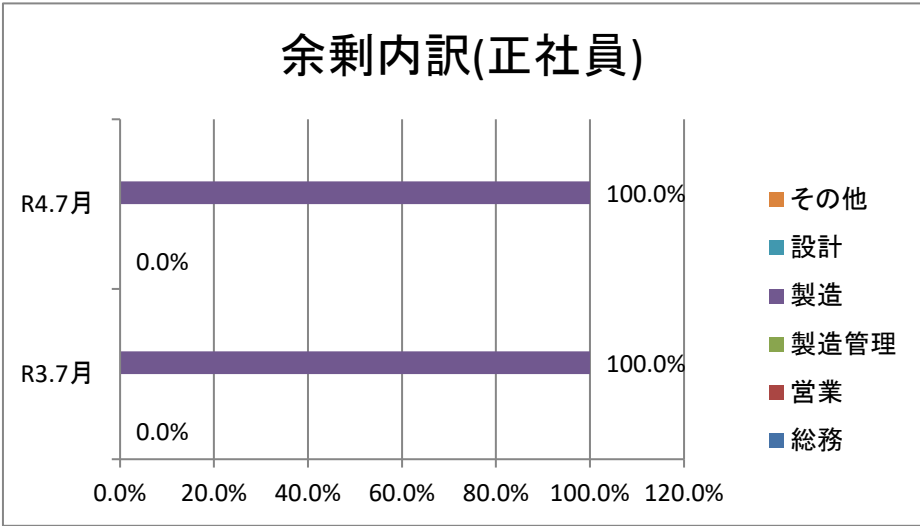


(10) 資金繰り

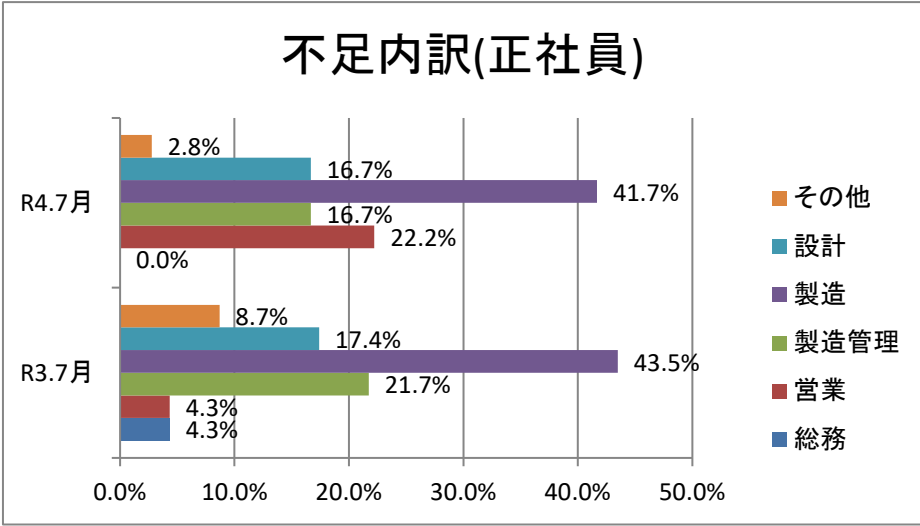


(11) 雇用状況① 正社員数

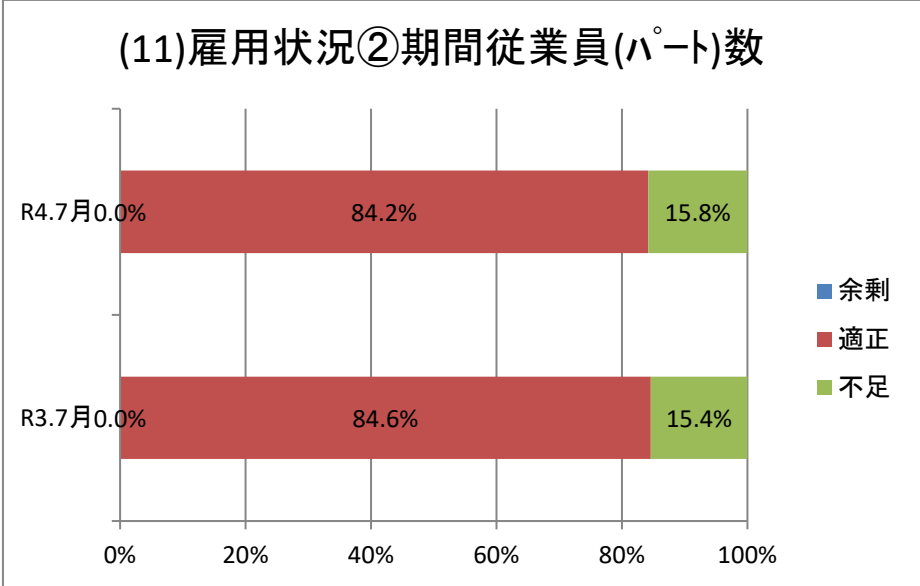


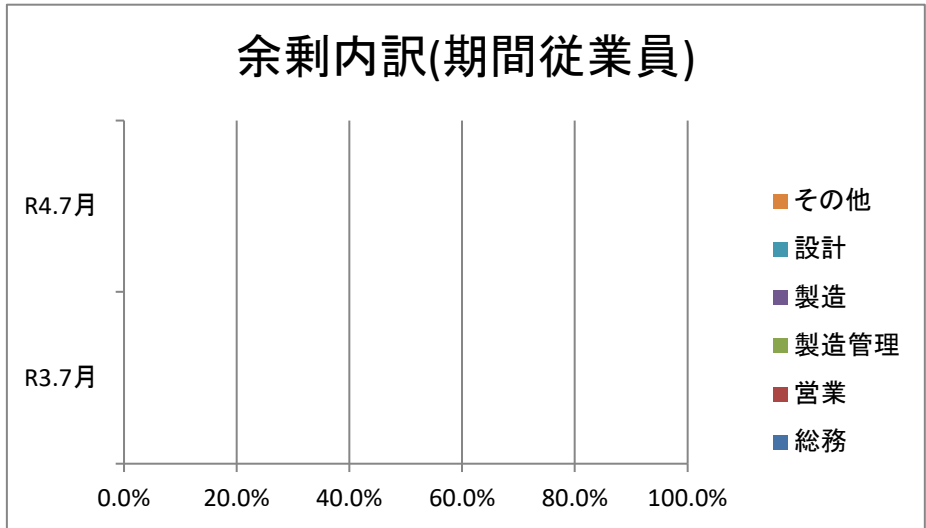


※総回答数に対する割合。

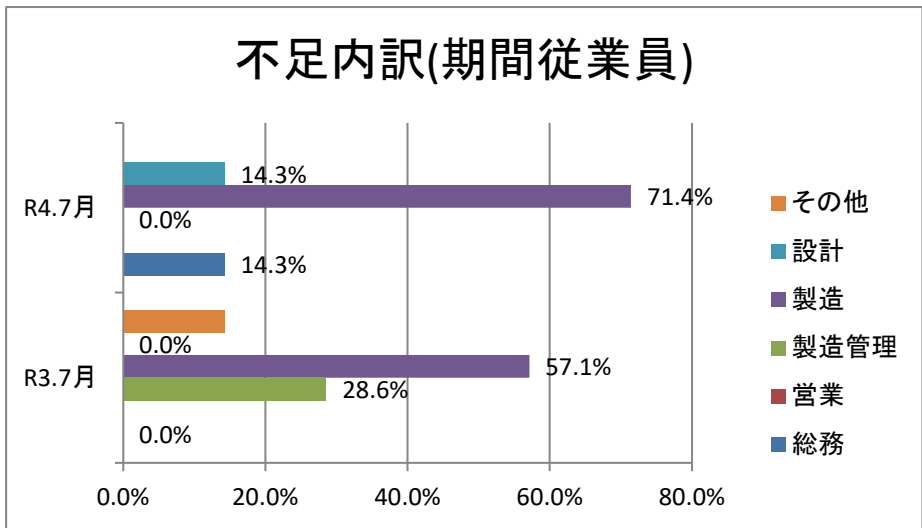


※総回答数に対する割合。

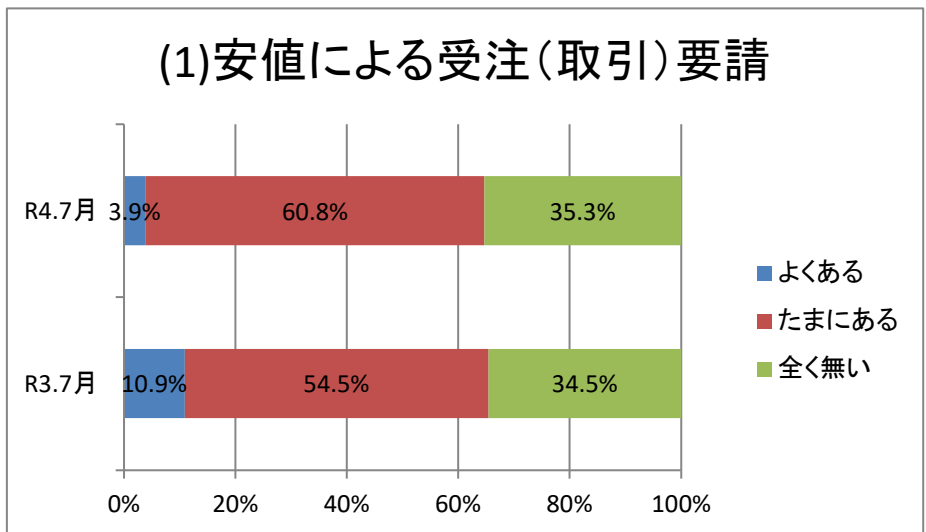




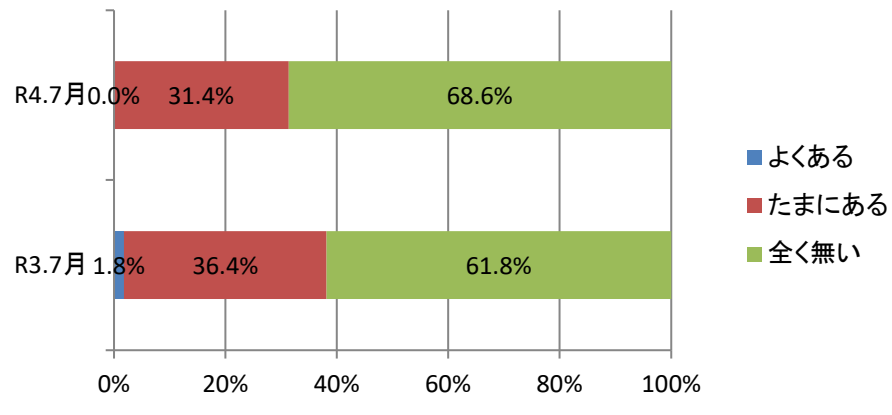
※総回答数に対する割合。



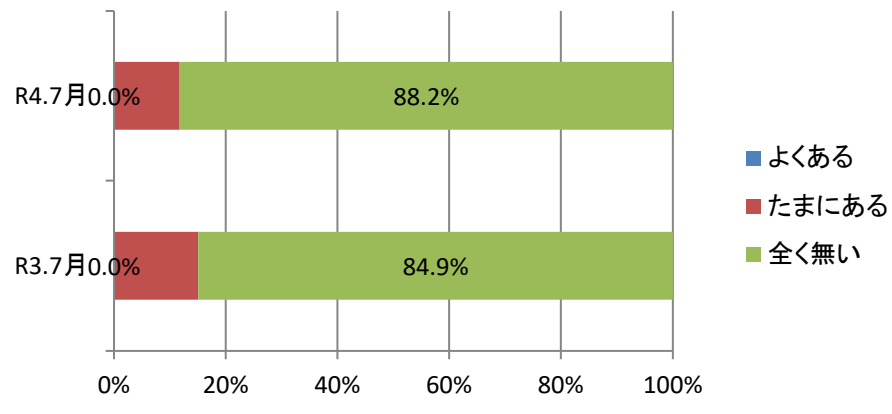
※総回答数に対する割合。



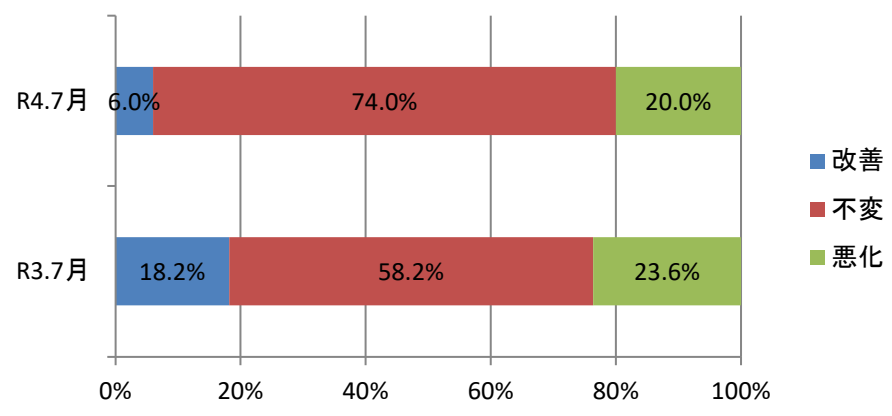
(2)受注後の値下げ要請



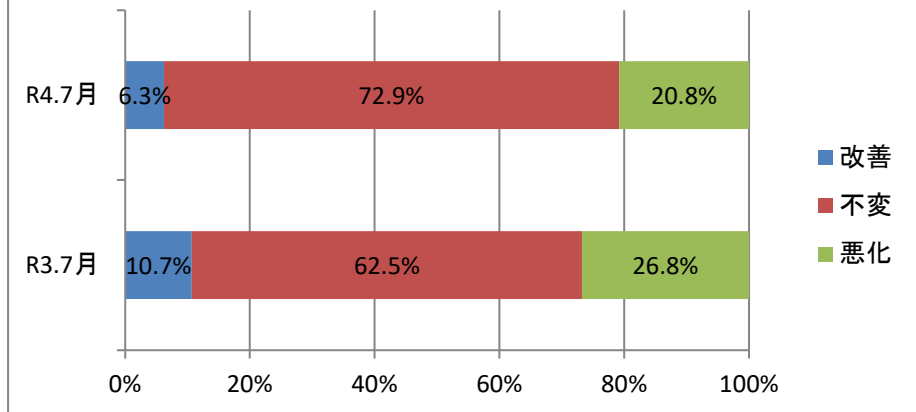
(3)決済方法の変更



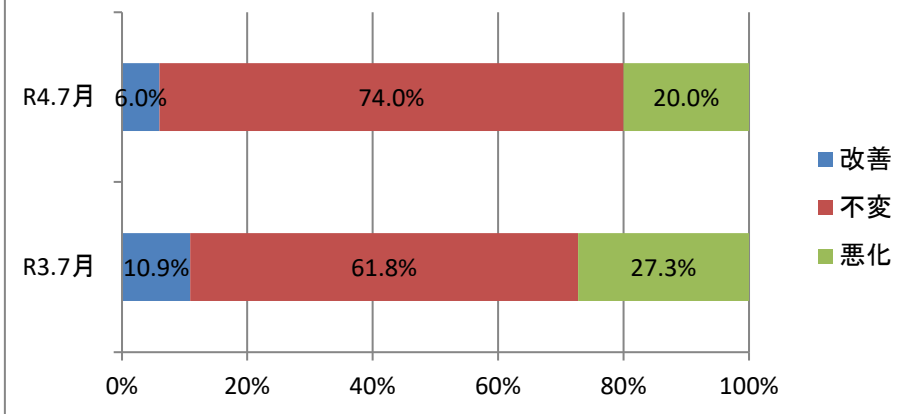
(1)国内景気の見通し



(2) 県内景気の見通し



(3) 所在地域の景気見通し



(4) 業界の見通し

