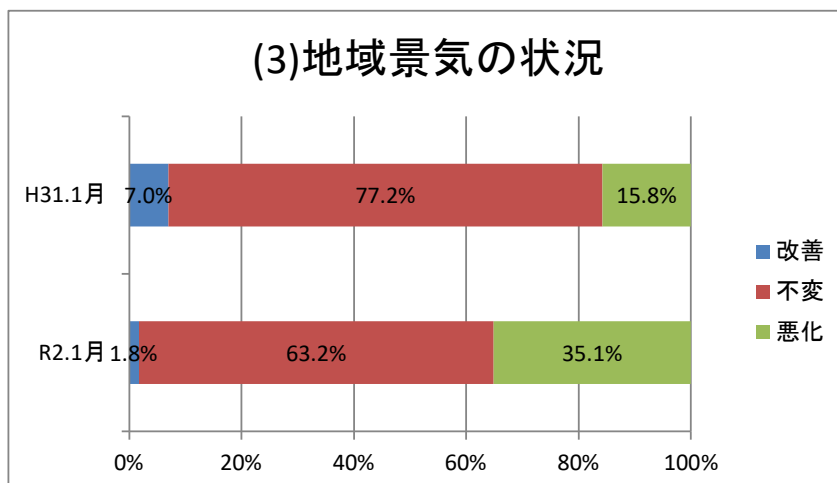
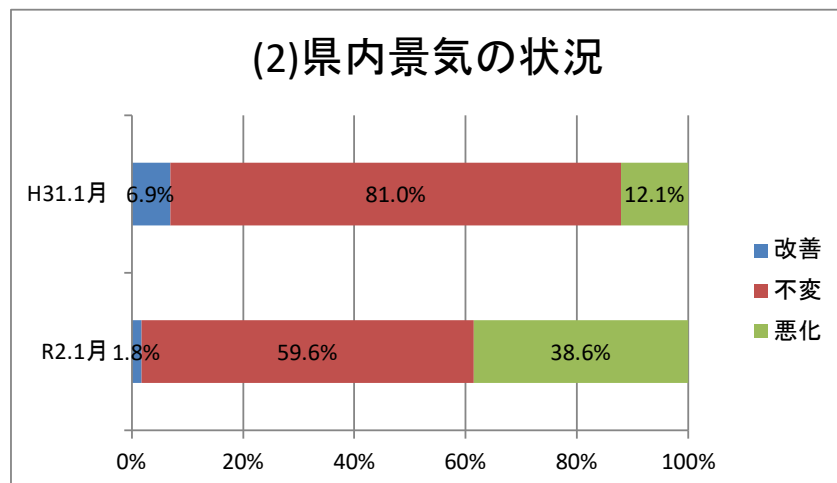
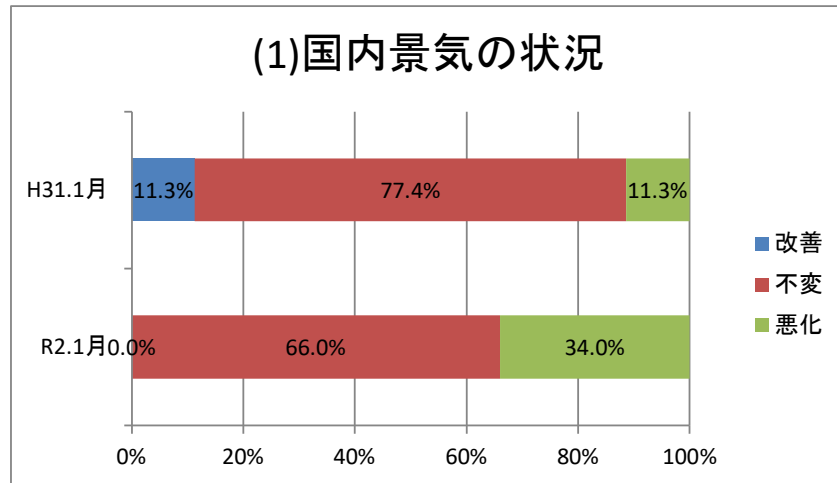


岩手県機械金属工業協同組合連合会景気動向調査結果(令和2年1月調査分)

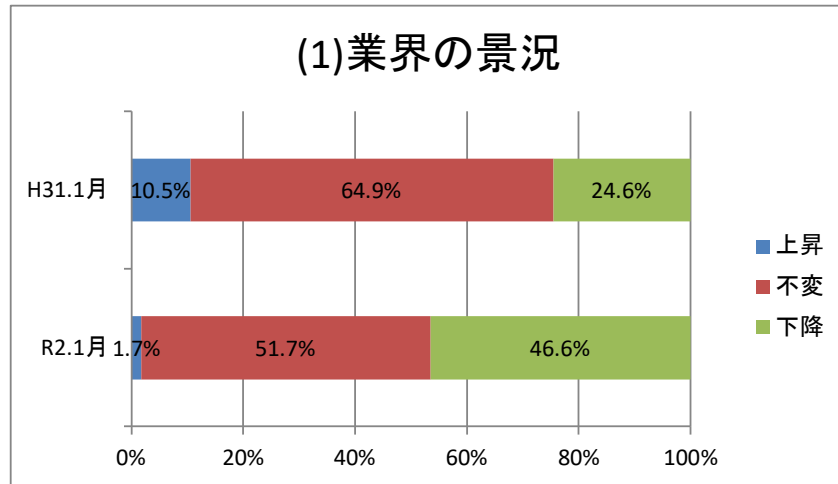
回答数 平成31年1月…58社/118社(49.1%)
令和2年1月…58社/117社(49.5%)

I. 直近3ヶ月の国内等の景況について

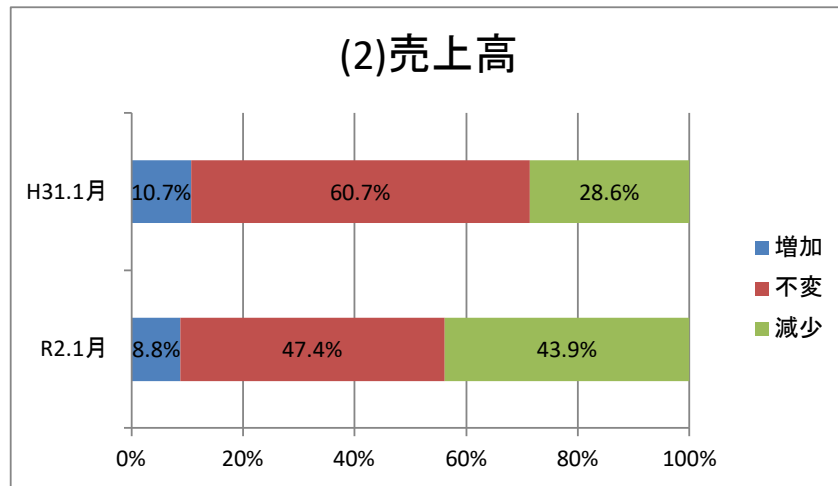


II. 貴社の景況について（直近3カ月の動向）

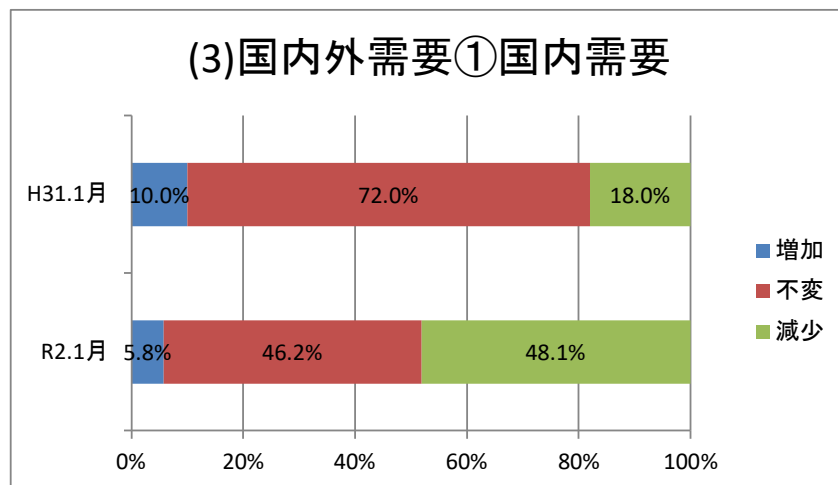
(1) 業界の景況



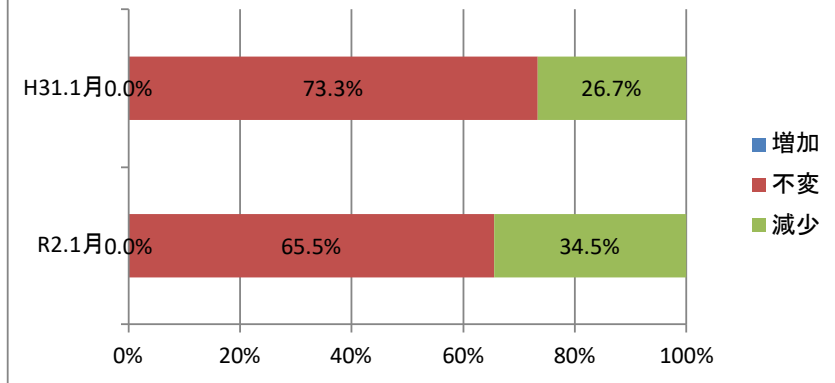
(2) 売上高



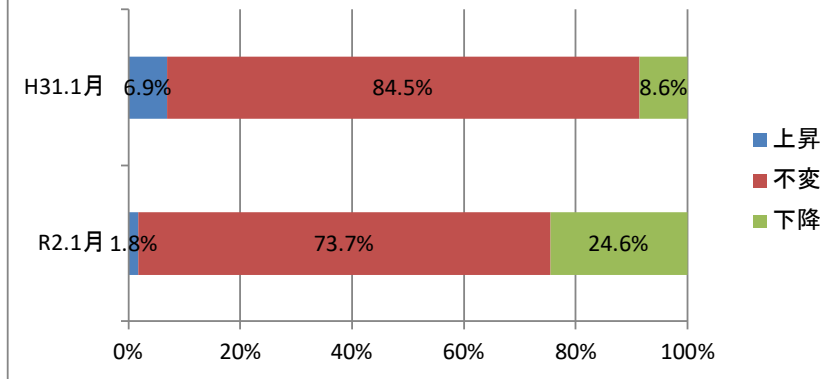
(3) 国内外需要①国内需要



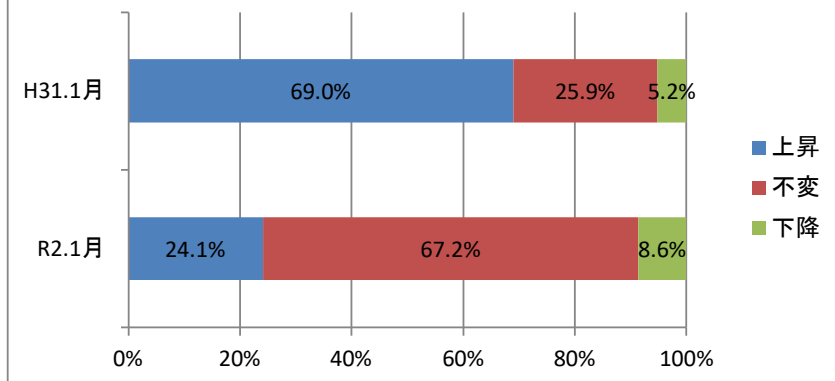
(3)国内外需要②海外需要



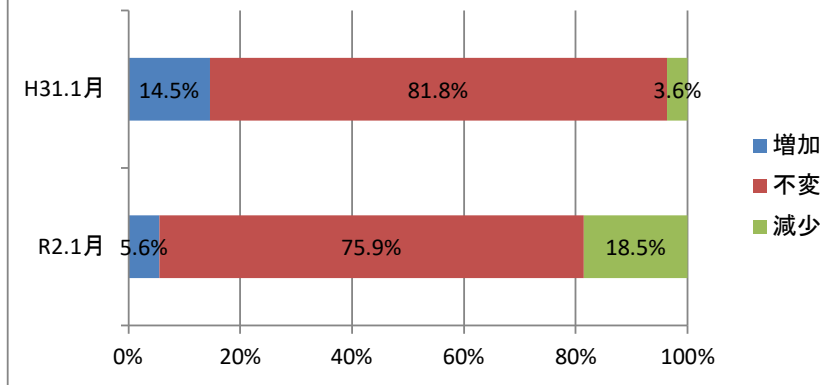
(4)製品販売(受注)価格



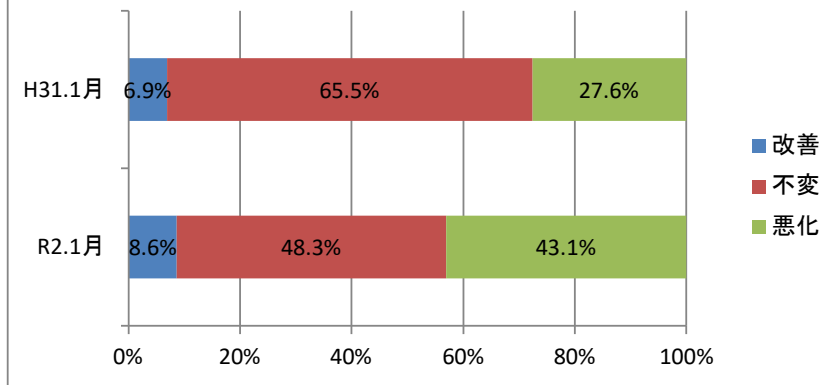
(5)原材料費



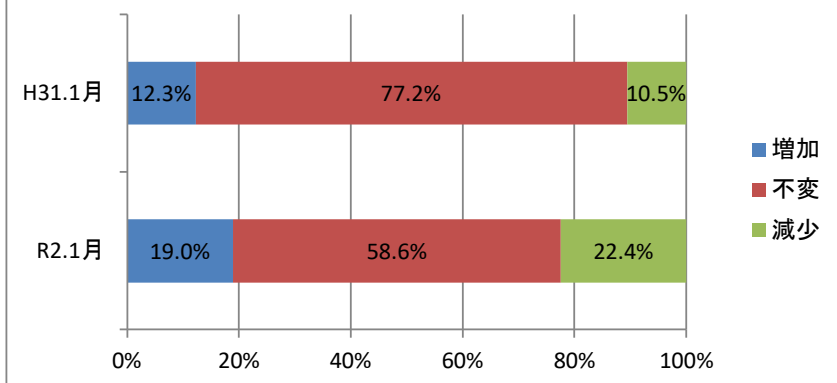
(6) 在庫数量



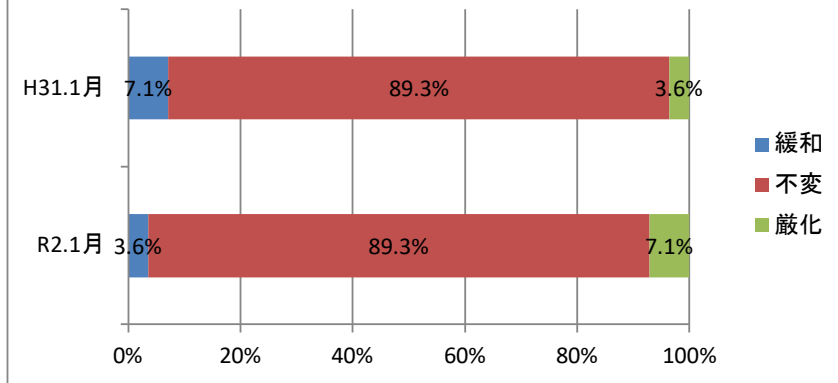
(7) 収益状況



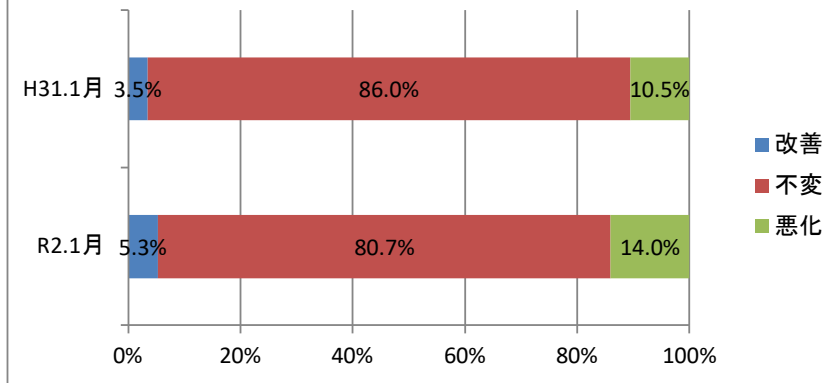
(8) 設備投資



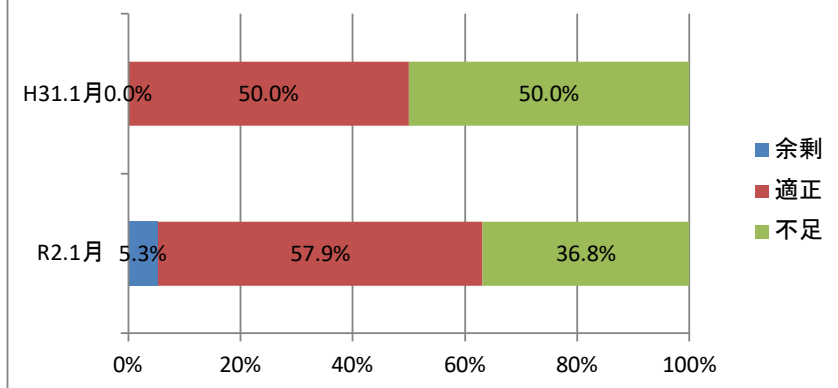
(9) 金融機関の融資態度

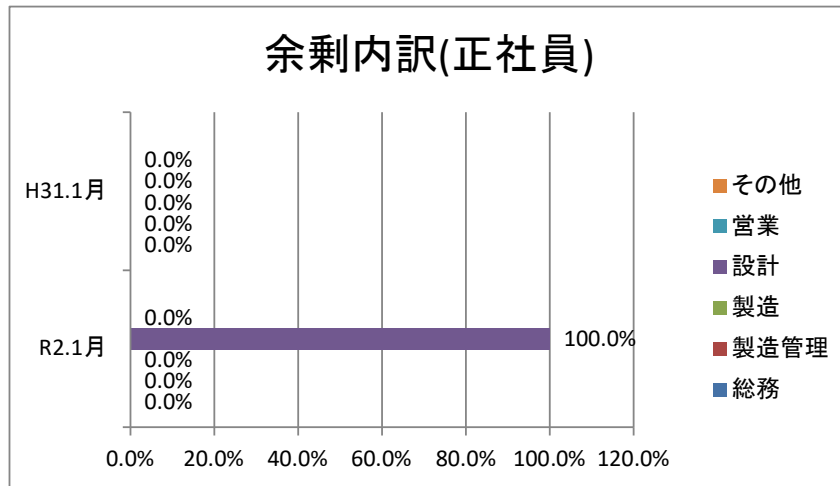


(10) 資金繰り

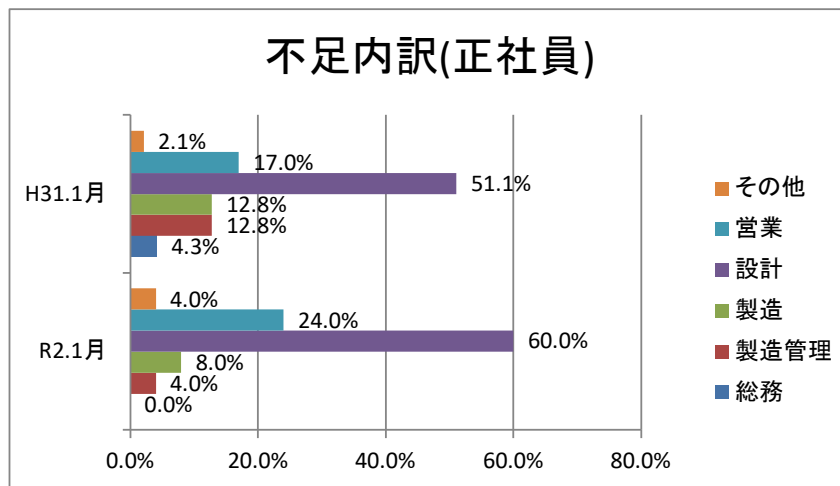


(11) 雇用状況① 正社員数

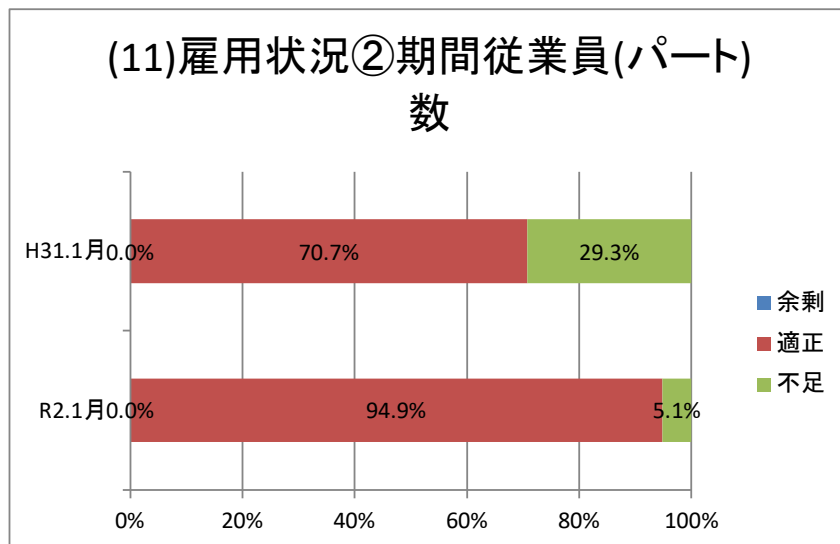


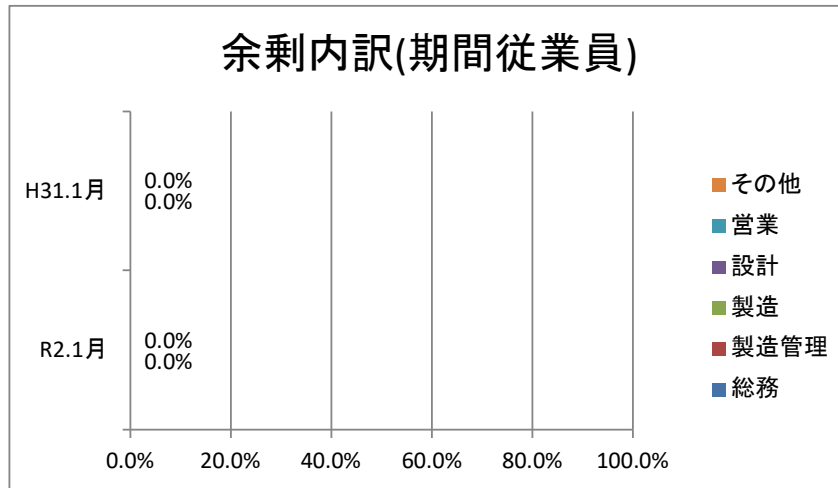


※総回答数に対する割合。

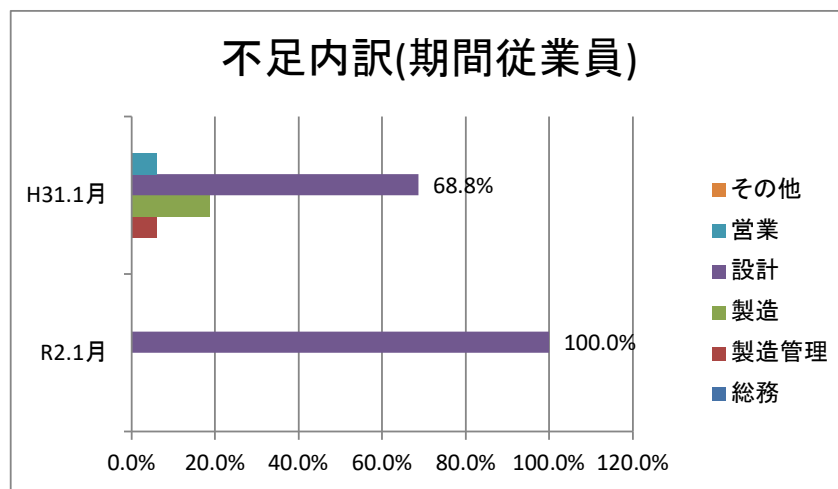


※総回答数に対する割合。



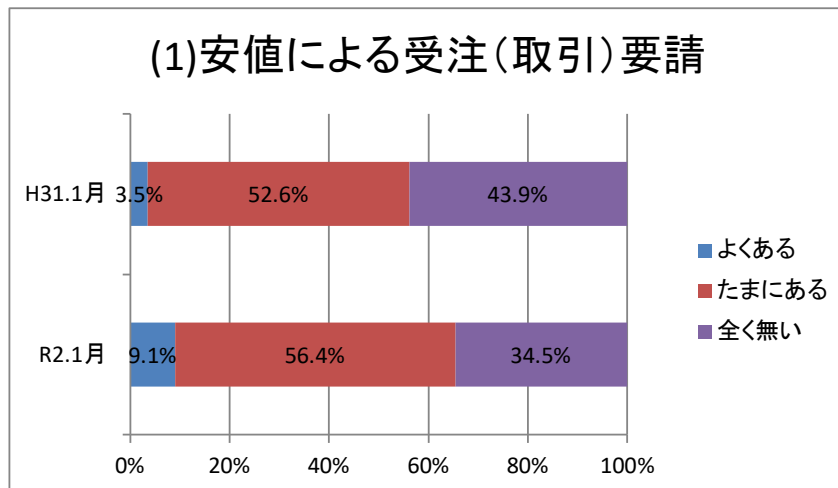


※総回答数に対する割合。

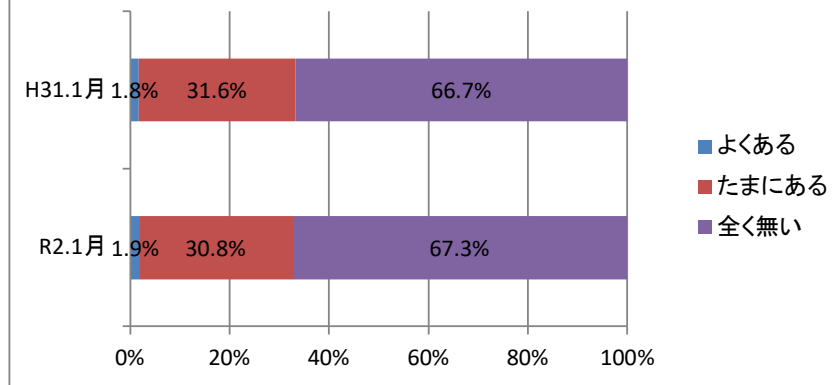


※総回答数に対する割合。

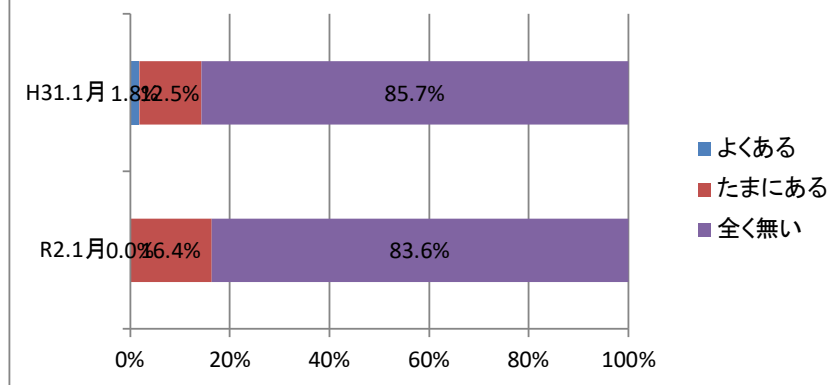
Ⅲ. 貴社の受注環境について



(2)受注後の値下げ要請

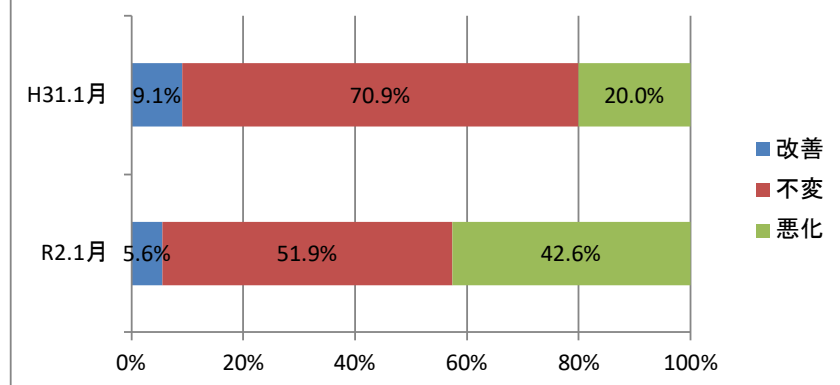


(3)決済方法の変更

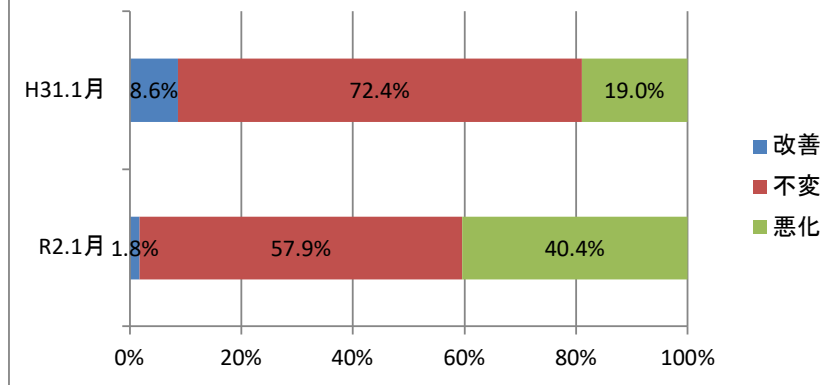


IV. 今後3ヶ月の景況見通しについて

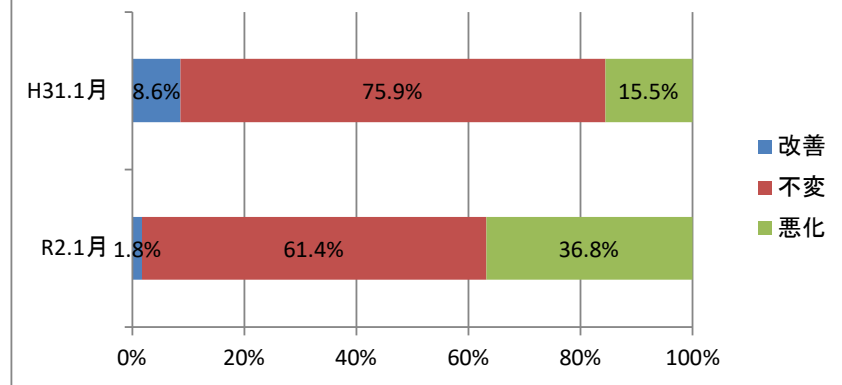
(1)国内景気の見通し



(2) 県内景気の見通し



(3) 所在地域の景気見通し



(4) 業界の見通し

