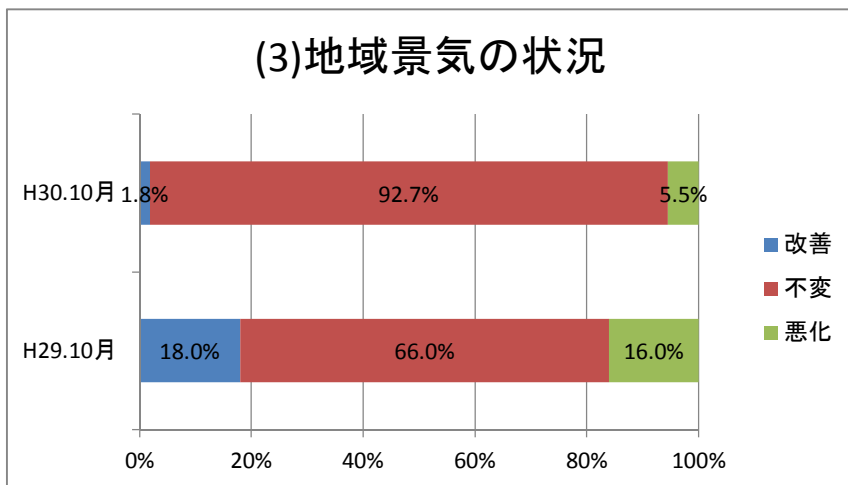
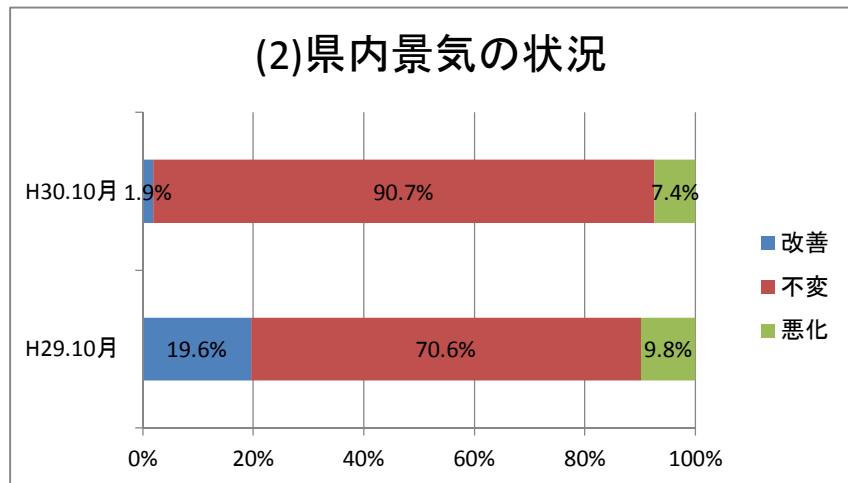
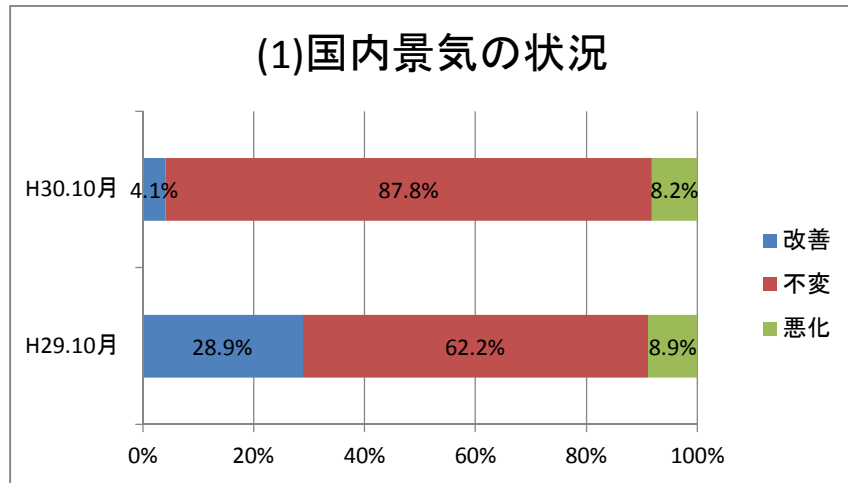


岩手県機械金属工業協同組合連合会景気動向調査結果(平成30年10月調査分)

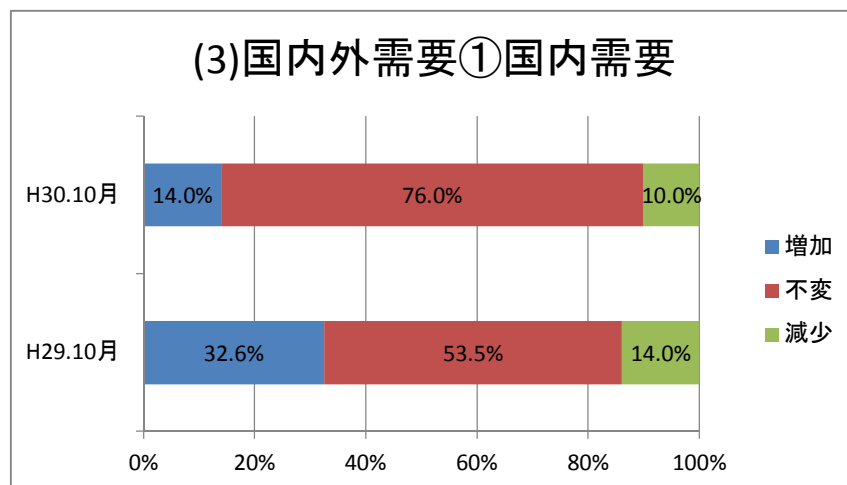
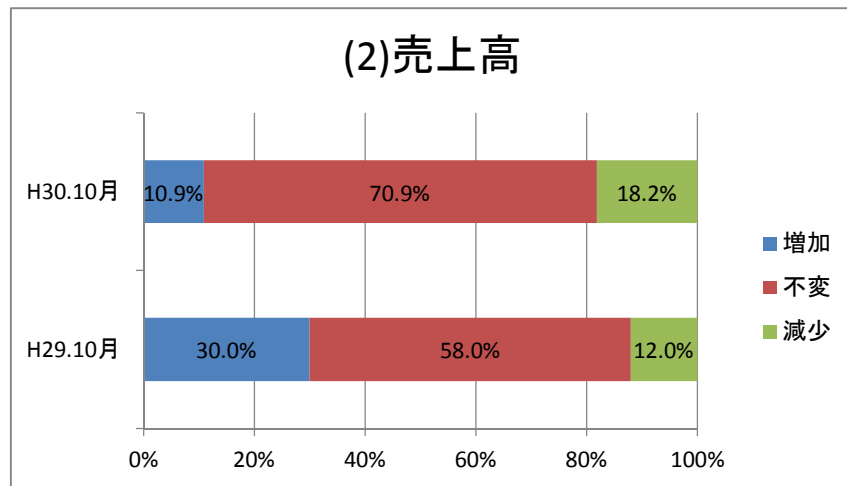
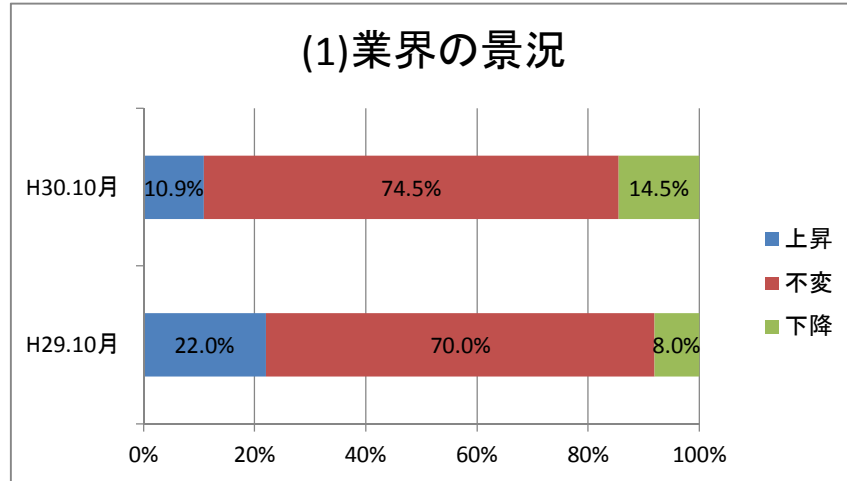
回答数 平成29年10月・・・51社/123社(41.5%)

平成30年10月・・・55社/118社(46.6%)

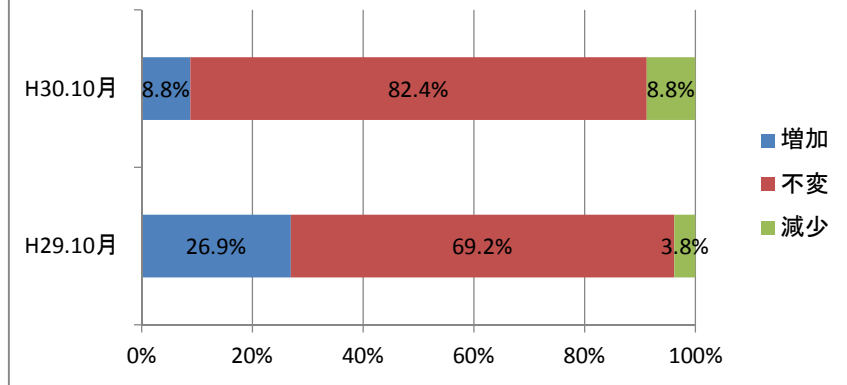
I. 直近3ヶ月の国内等の景況について



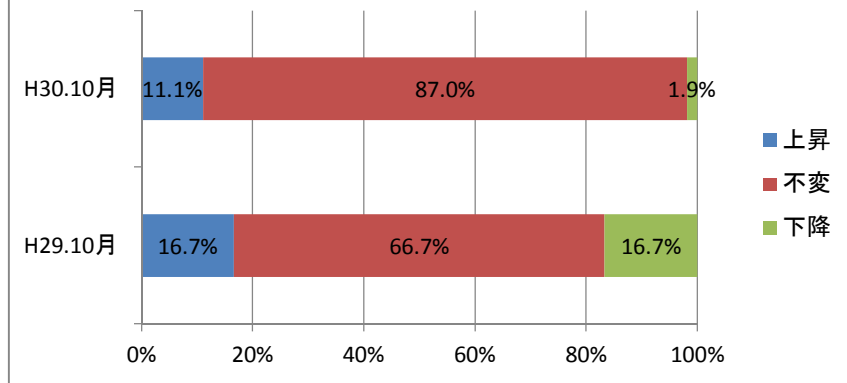
II. 貴社の景況について（直近3カ月の動向）



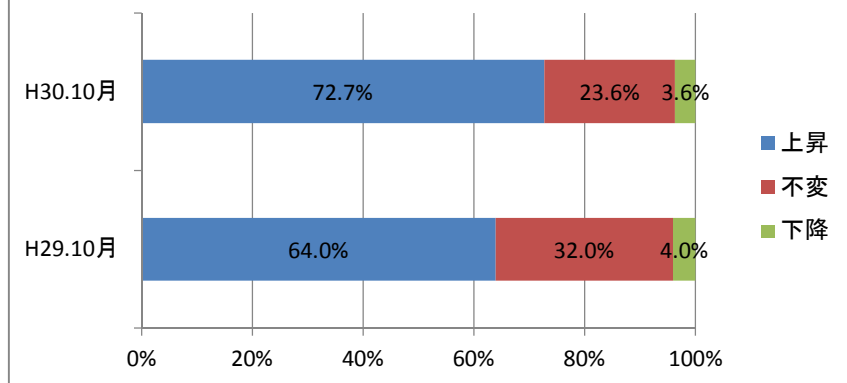
(3)国内外需要②海外需要



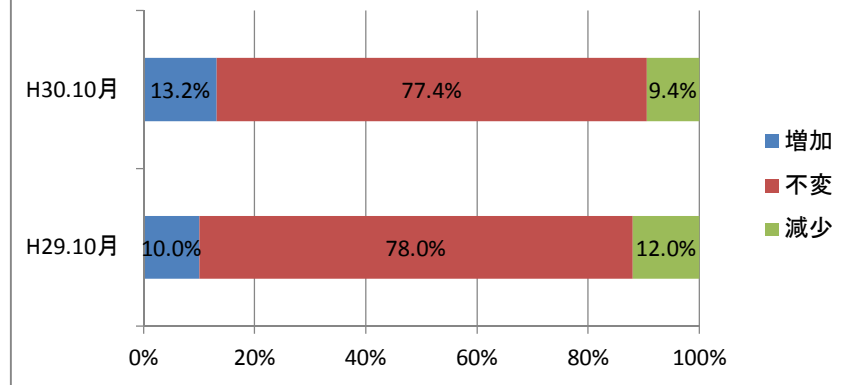
(4)製品販売(受注)価格



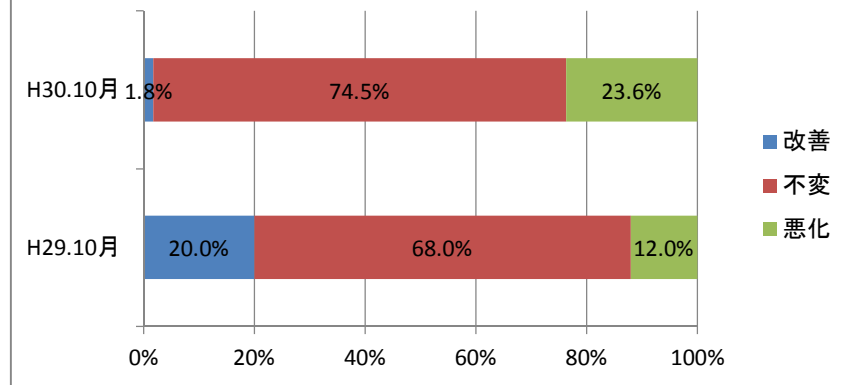
(5)原材料費



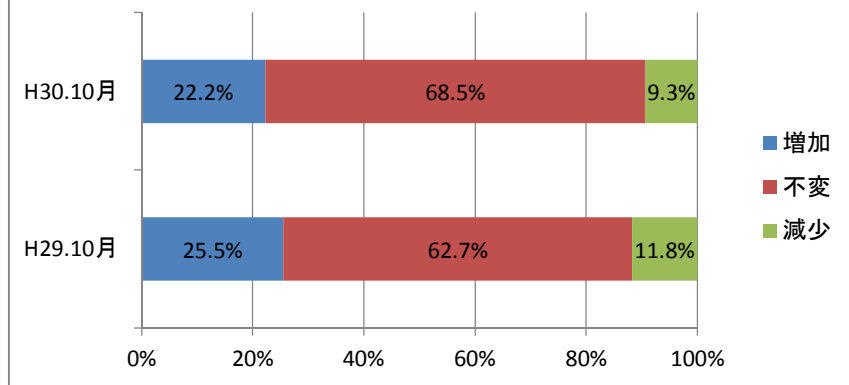
(6) 在庫数量



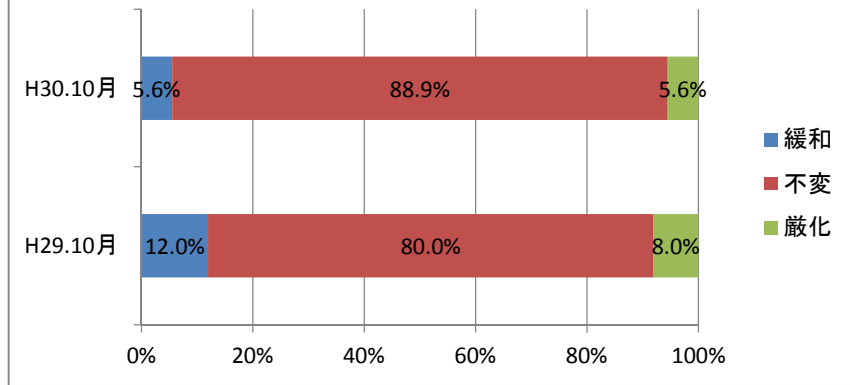
(7) 収益状況



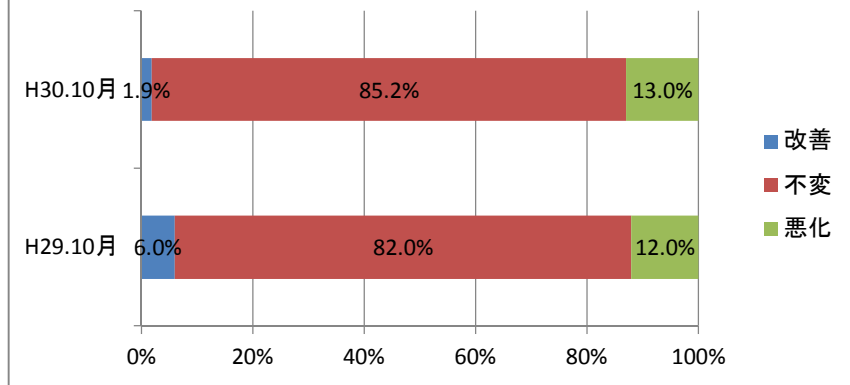
(8) 設備投資



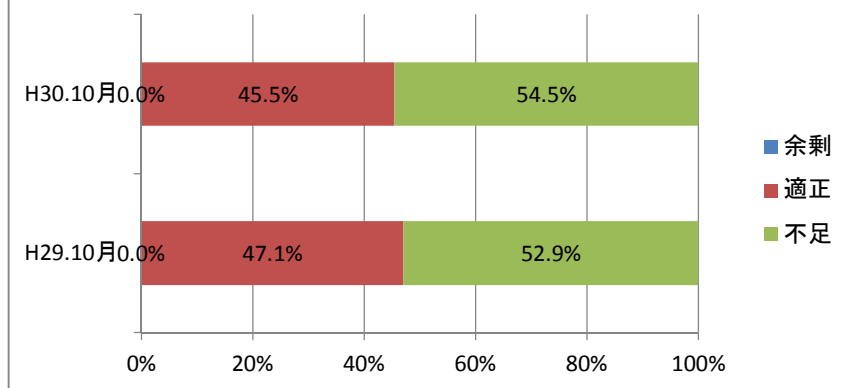
(9)金融機関の融資態度

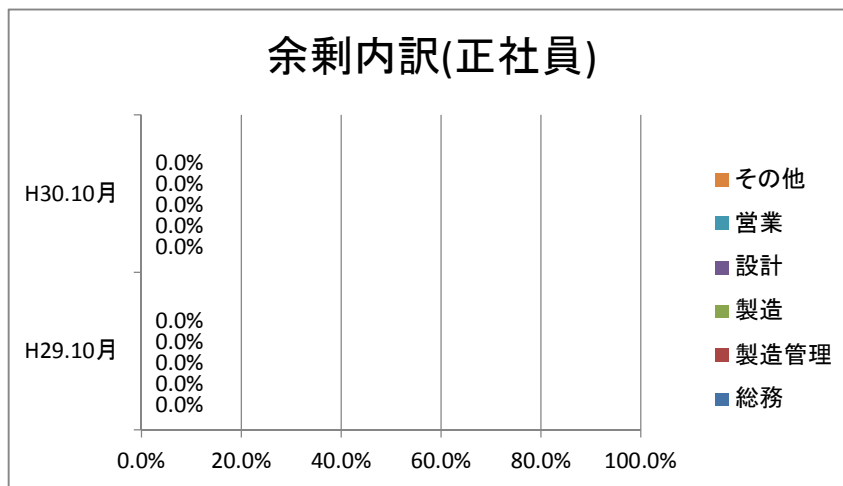


(10)資金繰り

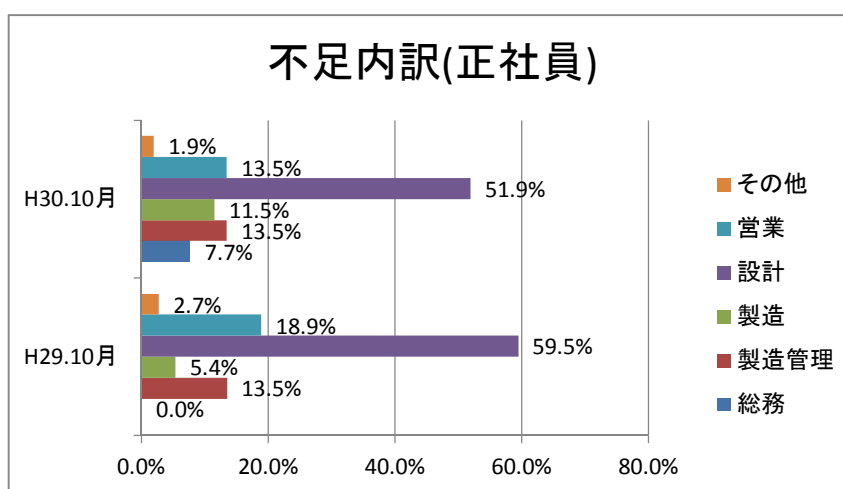


(11)雇用状況①正社員数

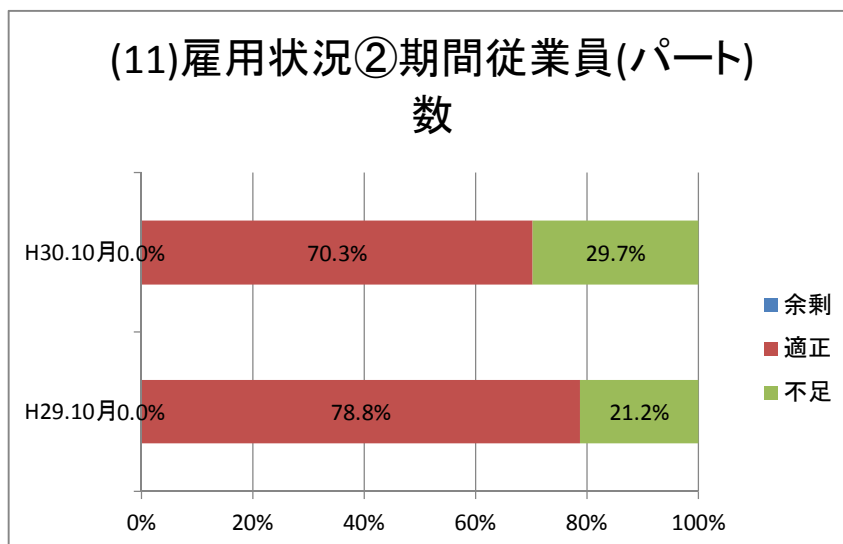


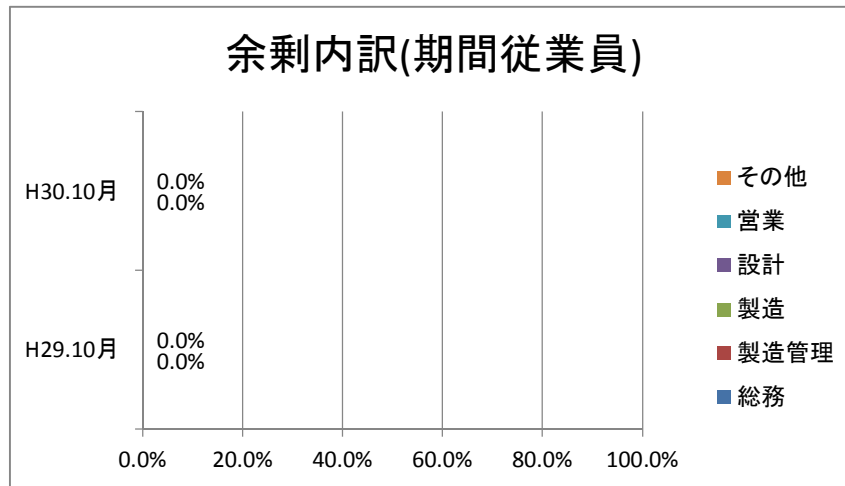


※総回答数に対する割合。

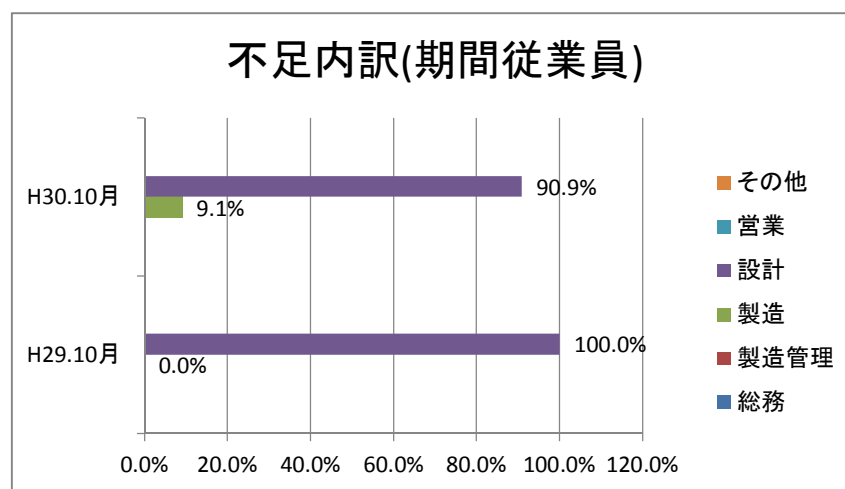


※総回答数に対する割合。



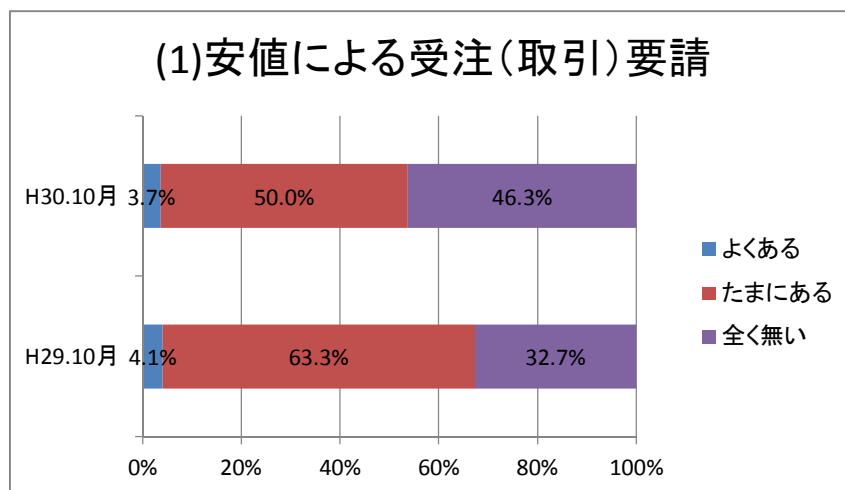


※総回答数に対する割合。

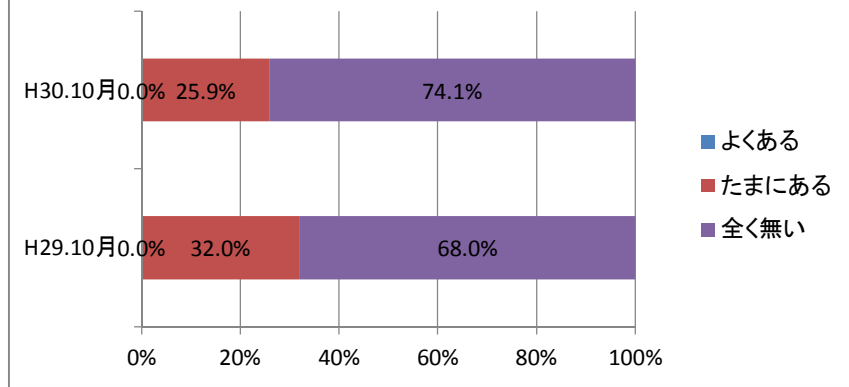


※総回答数に対する割合。

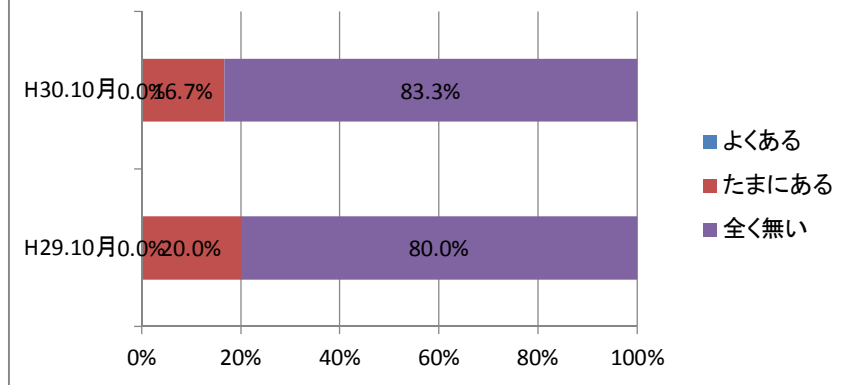
Ⅲ. 貴社の受注環境について



(2)受注後の値下げ要請

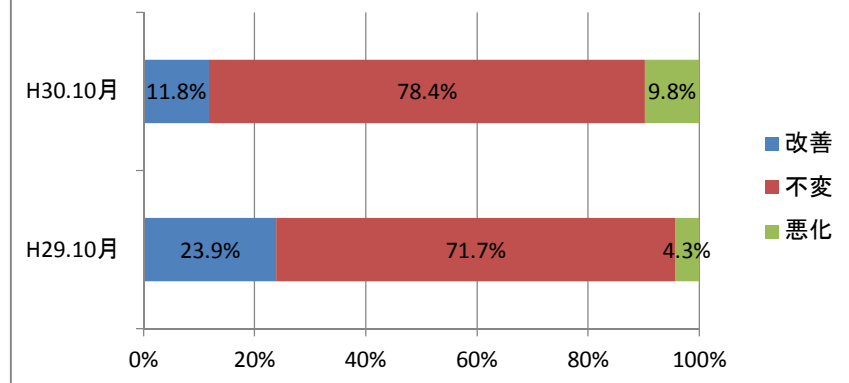


(3)決済方法の変更

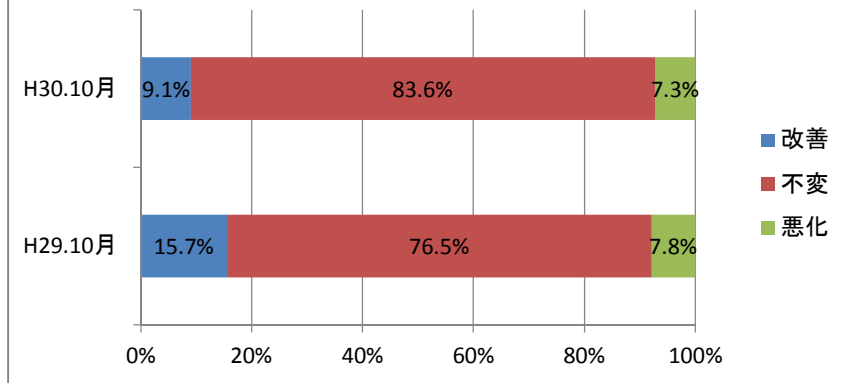


IV. 今後3ヶ月の景況見通しについて

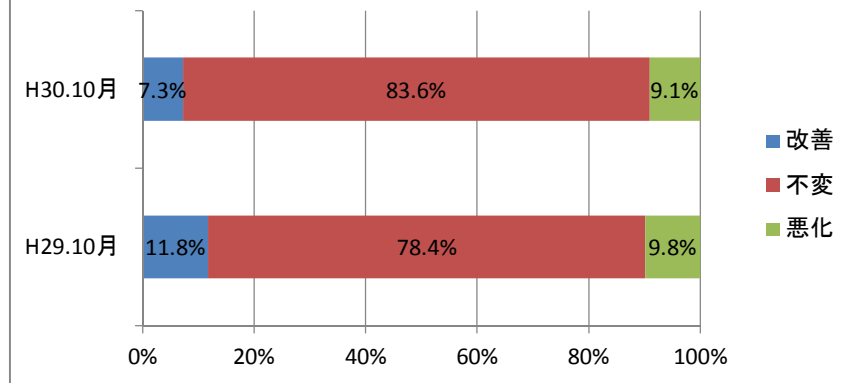
(1)国内景気の見通し



(2) 県内景気の見通し



(3) 所在地域の景気見通し



(4) 業界の見通し

